

annual report & financial accounts

to 31 December 2019



contents

Association Personnel	2
Association Contact List	3
Organisation Flowchart	4
Areas of Responsibility	5
Association Strategic Plan 2018 - 2021	6
President and General Managers' 2019 Report	7
Education Managers' 2019 Report	10
Finance Manager's 2019 Report	14
Kindergarten 2019 Reports	22
Kindergarten 2019 Financials - summary	31
Financial Statements and Auditor's 2019 Reports	33



association personnel

President	Sarah Nash
Board of Trustees	Ingrid Squire Alison Donovan Rob Barzey Karl Wairama Rachel Murray – Elected Staff Member Jessica Uri resigned Aug 2019 Sarah Beckett resigned Apr 2019 Janelle Hutchings resigned Apr 2019 Jo Coffin resigned Apr 2019
Life Members	Ms S Greathead Mrs S Low Mr D Ratima Mrs J Tidy Ms T Wright
Accountant	Epplert & Co
Auditors	Oldershaw & Co
General Manager	Helen McNaughten
Education Managers	Eileen Kennedy Beth Huddleston
Finance Manager	Leonie Bond
Admin / PA	Lynda Clark
Finance Support	Julie Crook

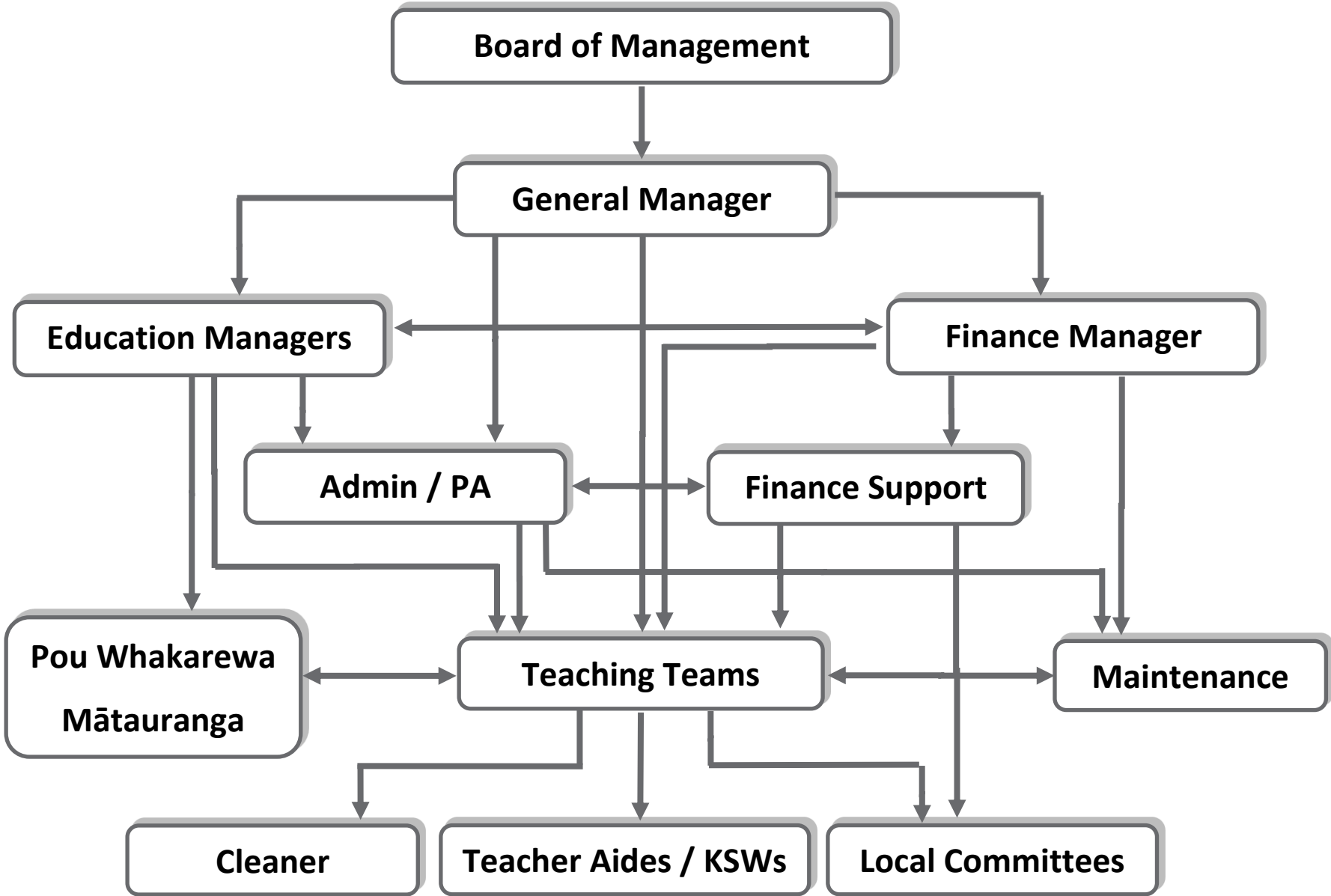
Admin Staff		4
Education Managers	2	
Pou Whakarewa Mātauranga	1	
Teaching Teams		
• Head Teachers	16	
• Teachers	51	
• Permanent Relievers	<u>2</u>	72
• TA / KSWs		17
Cleaner		1
Maintenance		<u>1</u>
		<u>95</u>

association contact list

Association Office	66 Kennedy Road, Napier PO Box 4298, Marewa, Napier 4110 Ph 835 7890 / Mobile 027 442 3163 Email gm@napierkindergartens.co.nz	
Bette Christie Kindergarten	10 Hurst Avenue, Maraenui, Napier 4110 Phone 843 5736 Email bettechristiekgtn@napierkindergartens.co.nz	40 children
Carlyle Kindergarten	113 Thackeray Street, Napier 4110 Phone 835 3952 Email carlylekgtn@napierkindergartens.co.nz	40 children
Eskview Kindergarten	11 Petane Road, Bay View, Napier 4104 Phone 836 6256 Email eskviewkgtn@napierkindergartens.co.nz	30 children
Greenmeadows Kindergarten	44 Osier Road, Greenmeadows, Napier 4112 Phone 844 9182 Email greenmeadowskgtn@napierkindergartens.co.nz	40 children
Marewa Kindergarten	2 Bedford Road, Marewa, Napier 4110 Phone 843 9434 Email marewakgtn@napierkindergartens.co.nz	40 children
Mary Richmond Kindergarten	6 Lister Crescent, Maraenui, Napier 4110 Phone 843 8514 Email maryrichmondkgtn@napierkindergartens.co.nz	30 children
Ngā Tamariki o Ngā Hau E Whā Kindergarten	55 Freyberg Street, Wairoa 4108 Phone (06) 838 4422 Email ntw@napierkindergartens.co.nz	30 children
Onekawa Kindergarten	29 Maadi Road, Onekawa, Napier 4110 Phone 843 5577 Email onekawakgtn@napierkindergartens.co.nz	40 children
Pirimai Kindergarten	17 Allen Berry Avenue, Pirimai, Napier 4112 Phone 843 5051 Email pirimaikgtn@napierkindergartens.co.nz	40 children
Riversdale Kindergarten	11 Cooke Place, Taradale, Napier 4112 Phone 844 8525 Email riversdalekgtn@napierkindergartens.co.nz	40 children
Tamatea Kindergarten	3 Norfolk Street, Tamatea, Napier 4112 Phone 843 4655 Email tamateakgtn@napierkindergartens.co.nz	40 children
Taradale Kindergarten	9 Puketapu Road, Taradale, Napier 4112 Phone 844 7701 Email taradalekgtn@napierkindergartens.co.nz	40 children
Te Awanga Kindergarten	204 Parkhill Road, RD 10, Hastings 4180 Phone 875 0224 Email teawangakgtn@napierkindergartens.co.nz	30 children
Wairoa Kindergarten	18a Brian Avenue, Wairoa 4108 Phone (06) 838 7026 Email wairoakgtn@napierkindergartens.co.nz	30 children
Wharerangi Kindergarten	13 Essex Street, Tamatea, Napier 4112 Phone 844 4113 Email wharerangikgtn@napierkindergartens.co.nz	40 children
Wycliffe Ngā Tamariki Kindergarten	26 Cranby Crescent, Onekawa South, Napier 4110 Phone 843 2932 Email wntkgtn@napierkindergartens.co.nz	30 children



organisation flowchart



areas of responsibility

Board of Trustees

President plus eight, including one elected staff board member with voting rights

Strategic Planning
Policy Development and Review
Governance

General Manager / Finance Manager

Association Management including Finances
Licensing and Compliance
Legislation and Regulations
Health and Safety
Employment
Payroll
Advice and Support (Staff and Committees)
Policy Management and Review

Education Managers

Professional Development
Team Support and Development
Curriculum Management
Appraisals
Policy Management and Review
Playground Development
Health and Safety

PA

Administration and support to the General Manager, Education Managers and the Teaching Teams

Finance Support

Financial assistance and support to the Finance Manager including payroll
Finance support to kindergartens and kindergarten committees including applying for grants

Teaching Teams

Curriculum Implementation
Quality Programming
Roll Management
Parent Education
Local Committee Liaison
Health and Safety

Pou Whakarewa Mātauranga

Guidance and advice on Maori perspectives, providing opportunities for articulation and discussion with teachers and colleagues
Work within kindergartens alongside teachers to increase understandings and the use of Tikanga Maori and Te Reo
Work with children to provide opportunities for them to experience Te Reo Maori and Tikanga Maori

Local Committees

Fundraising

Maintenance

Day to day maintenance work in kindergartens

Cleaner

One cleaner employed by the Assn to clean a kindergarten. Other kindergartens cleaned under contract.



Napier Kindergarten Association's Strategic Plan 2018 - 2021

Vision Learning is child's play and teaching is a passion

Purpose Children and parents look forward to their kindergarten experience

Goals Meet community ECE needs
A resilient organisation
Financial sustainability

Priorities

Communication	People	Environments	Future Sustainability
<ul style="list-style-type: none"> Free flowing communication is evident across all levels of our association We use a wide range of mediums to communicate with our whānau We raise brand awareness through marketing strategies We can articulate our practice, who we are and what we stand for 	<ul style="list-style-type: none"> We have a culture of <ul style="list-style-type: none"> Respectful and trusting relationships Care for the well being of all people Supporting employees through change Professionalism We are ECE leaders in teaching practice We nurture and grow leadership capability We have a solid reputation for greatness Our people are qualified, competent, flexible, adaptable and share our vision and commitment Children and whanau are engaged We are an employer of choice 	<ul style="list-style-type: none"> Environmental awareness and respect evident Our resources, facilities and services are fit for purpose Environments are engaging for employees, children and whānau 	<ul style="list-style-type: none"> Accessibility: meeting community whānau needs, affordable We provide services to as many whānau as possible by being adaptable and responsive to changing needs Full enrolment levels, waiting lists Strong financial position 3 months cash reserves Financially prudent and savvy Our kindergartens are well resourced We plan strategically for opportunities to open new services We plan strategically for the long term future of kindergarten provision in Napier and Wairoa

Initiatives

<ul style="list-style-type: none"> Develop communication strategies and plans for <ul style="list-style-type: none"> Communication across our association Communicating our decision making processes Consultation Review our marketing initiatives – are they <ul style="list-style-type: none"> Visible Regular and effective Conveying the right messages 	<ul style="list-style-type: none"> We have plans for building employee resilience and capability, and deliver on them Opportunities to grow leadership capability are available to and taken up by employees Succession plans are in place for Board and key management employees Positive feedback from those using / interacting with our service 	<ul style="list-style-type: none"> Our properties are well maintained, regularly serviced and legally compliant Our environments are safe, well planned, attractive, encourage curiosity and excitement 	<ul style="list-style-type: none"> We have processes in place to regularly check whānau's views of our services and the extent to which we meet their needs We are flexible and adaptable to meeting community needs
--	---	---	--

Measures / Indicators

<ul style="list-style-type: none"> Communication plan is developed Delivery of communication plan is evident Social media coverage 	<ul style="list-style-type: none"> Positive ERO reports Succession planning for the Board and key personnel Volume of applicants for vacant positions Employee retention levels Exit survey results Board / community engagement and feedback 	<ul style="list-style-type: none"> Positive ERO reports Health and safety obligations met Health and safety reports Regulation requirements met Kindergartens moving through Enviroschool reflections Parent feedback 	<ul style="list-style-type: none"> Operating within budget 3 months reserves % enrolment levels % satisfaction of parent Number of new services Financial reporting and monitoring Enrolment monitoring
---	---	---	--

Values

Professionalism
Excellence
Future Focussed
Inclusive
Commitment

Teaching and Learning

Tangatawhenuatanga: Every child experiences the breadth and depth of a rich local curriculum

Manaakitanga: Every child's culture, identity and language is affirmed

Rangatiratanga: Every child becomes increasingly confident and competent to run their own lives

Whakawhanaungatanga: Teachers engage in partnership with parents and whānau to promote learning success

Ako: Every child is empowered by the kaupapa of creating a healthy, peaceful, sustainable world through people teaching and learning together



president and general managers' 2019 report

*He aroha whakatō,
He aroha puta mai*

*If kindness is sown,
then kindness you shall receive*



'Children re-invent your world for you' – Susan Sarandon

As an Incorporated Society one of our obligations is to make an annual report to you, our members, outlining the key accomplishments and challenges we faced in 2019. You'll learn what we did and how well we did in governing, teaching and financially managing our Association.

Board Activities

Our Board had a full agenda for 2019 during which we:

- attended 11 Board meetings
- met with parents of Onekawa and Riversdale kindergartens
- attended New Zealand Kindertartens AGM in September
- attended the AGM's of 7 of our kindertartens
- attended Napier Kindertartens AGM
- held a question and answer meeting with parents regarding our proposed new Constitution
- held a Special General Meeting to replace our Constitution
- attended a Board Strategic Planning Day
- produced 9 Parent Newsletters and 6 Employee Newsletters
- commenced a Communications review and a Social Media review

We sadly farewelled Jessica Uri after her extraordinary contribution of nine years on our Board, eight of which she served as our President. Thank you, Jessica, for your unstinting and enormous support of Napier Kindertartens.

Sarah Nash stepped into the role of President, smoothly transitioning into the role and capably and confidently leading the Board since then.

Board Focus

The Board's priority at present is firmly on our financial position and long-term viability. This is directly linked to the number of children accessing our services which has sadly been in decline. While we once enjoyed an average enrolment level of 99%, we ended the 2019 year with an average enrolment level of 92.7%.

The impact of this is that we have now recorded financial losses for two years in a row (2018 and 2019), which are currently funded from our reserves. A loss of just over \$138,000 is anticipated for 2020, although that was pre-COVID 19.

In addition to the lower levels of enrolments, we are experiencing high levels of irregular attendance at some kindergartens. In these situations, our funding is withdrawn for the children who are attending irregularly.

In an endeavor to reverse these trends we have reviewed our kindergarten offering and broadened the options available to parents as outlined further on in this report.

Concern about our long-term financial viability is one of the factors promoting our exploration of Kindergartens Aotearoa (as also commented on later in this report).

We would like to thank you for the fee payments and donations received – these have been much appreciated contributions towards funding our kindergartens in an environment where every dollar counts.

The post Government Budget announcement in May 2020, which restores in 2021 our funding to employ only qualified, registered teachers in teaching positions, is a huge relief after 10 years of receiving only partial funding. The full benefit of the additional funding that will be available to us may not be realised however if the lower enrolment levels we are currently experiencing continue.

We are also focused on communication and how this is best achieved across our organisation. Certainly, the shutdown over COVID 19 has highlighted the necessity of having a number of forums available by which to stay in contact with our kindergarten communities. Our Board is reviewing this area and welcomes parent and employee input on how to best communicate with you and share with you the wonderful initiatives occurring on a daily basis in our kindergartens.

As we approach our AGM, we are thinking about Board succession planning – how to attract new Members and induct them into their roles to ensure continuity and success in governance. We need good people to help us, so we encourage anyone interested in co-opting to the Board to contact our General Manager for an obligation free discussion.

Tiki Atu / Kindergartens Aotearoa

In previous AGM reports we have talked about our involvement as part of a working group called Tiki Atu (advancing). This group is a coalition of eight kindergarten associations across New Zealand exploring the possibility of merging their associations into a new Association; Kindergartens Aotearoa.

We are exploring whether this option might create new opportunities for our kindergartens, children and employees as well as provide a higher degree of confidence about our future. Our Board has already determined there are a number of non-negotiables Kindergartens Aotearoa would have to offer in order for our Board to give a favorable recommendation to our Members:

- children and education remain at the heart of the organisation
- must meet its communities' diverse needs (rather than offer a standard 'one service fits all' approach), reflecting local flavor and interests
- sustain kindergartens to remain in each community
- share a common kindergarten philosophy and values
- operate as a not for profit entity
- care about its people – whether they be children, parents or employees
- elevate teaching and learning
- grow and strengthen the kindergarten movement

Ultimately it is our members who will decide whether or not this is an option for Napier Kindergartens however before that decision is made, it is important our Members have all of the relevant information about Kindergartens Aotearoa. It is also important that the voice of a smaller provincial association is heard in the development of Kindergartens Aotearoa, so that the things we love are considered and, hopefully, incorporated.

Change to our Kindergarten Offering

During 2019 Bette Christie Kindergarten changed their kindergarten offering by adding a 7.5 hour session for children and being open for up to 50 weeks of the year. These changes diversify the kindergarten options available to parents; in particular those in employment or studying while giving peace of mind knowing their children are well cared for in a safe, education focused environment. A core consideration in developing these changes was a focus on the wellbeing of children and our employees. We were particularly heartened to see the ERO review comments about Bette Christie Kindergarten which supported the great things happening for children there.

Towards the end of 2019 discussions commenced with Riversdale, Wharerangi and Wycliffe Ngā Tamariki Kindergartens about extending their kindergarten year to up to 50 weeks per annum too. These changes are to be introduced during 2020.

Constitution Rewrite

Our Constitution outlines the rules by which our Association operates. From time to time it is amended to take into account desired changes. Occasionally the number of changes to be introduced means it is better to present a replacement Constitution for approval, to prevent the existing one from becoming unwieldy and confusing.

We began reviewing our Constitution in 2018. During 2019 we undertook a major rewrite of our Constitution and presented it for approval at our AGM meeting in April 2019. Additional parent consultation was offered after the AGM before the new Constitution was adopted at a Special General Meeting in June.

Once the new Constitution was adopted a Membership Booklet was produced, so that anyone considering Membership of Napier Kindergartens could be fully informed about membership rights and obligations.

COVID-19

Towards the end of 2019 we began to hear first reports of a new Coronavirus emerging in China, with the potential to become a serious worldwide threat. We want to acknowledge the incredible journey we are now all on as a result of COVID-19. Its impacts will continue to affect us for a long time yet and will challenge everything we had previously accepted as normal and possible. Despite this we have seen stunning examples of people's resilience, creativity, and kindness.

We want to acknowledge our employees for their continued commitment to our kindergarten parents and children through the Level 3 and 4 lockdowns. An amazing series of Facebook postings kept our children connected with their teachers and education as well as the phone, email and Facetime contact between individual children and their teachers.

Our Education Managers maintained professional oversight of and contact with our teachers. They provided curriculum guidance, taking into account the restrictions applied to our kindergartens due to COVID-19.

Behind the scenes many aspects of work for the management team continued, with the addition of new reporting requirements, adapting to new technology such as zoom meetings, adapting to working from home, and making sense of the scores of COVID-19 related emails. In particular Leonie and Julie put in many additional hours, ensuring all the financial and payroll aspects of our association were managed well.

Our mobile phone app was enhanced to allow direct contact with additional groups of people and provided a quick and effective means of communicating with parents and employees. We added a Contact Tracing function to assist our kindergartens and parents to meet our contact tracing obligations.

Our Board received regular updates on what was happening across our association and were well prepared for and informed at each stage of the Alert Level transitions.

2020 – The Year Ahead

We plan to evaluate the impact of COVID-19 on our organisation, then identify and respond to key learnings about the effectiveness of our response and operations.

We have forecast a substantial \$138,000 loss for 2020, however COVID-19 was an unforeseen situation and we have yet to quantify the full impact it will have on our financial position. We will monitor our finances closely as our kindergartens work through the various COVID Alert Level changes.

E haere ra

Sarah Nash
President

Helen McNaughten
General Manager



education managers' 2019 report

Napier Kindergarten Association Strategic Vision: Learning is child's play and teaching is a passion

Napier Kindergarten Association Strategic Mission: Children and parents look forward to their kindergarten experience

This report has been reported under the headings of the Teaching and Learning goals in our strategic plan which underpin the strategic Vision and Mission

Rangatiratanga: Every child becomes increasingly confident and competent to run their own lives



Tina Abela working with tamariki at Wharerangi Kindergarten

Manaakitanga: Every child's culture identity and language are affirmed

Teresa Redington has continued to run the HB Early Childhood Education English for speaker of other languages (ESOL), Professional Learning Community (PLC).

Teresa successfully obtained Ministry of Education funding for ESOL Professional Learning Communities (PLCs) to undertake a special project in bringing Dr Jannie Van Hees to present 'Talking quality for ECE teachers'



Milestones in Professional Lives

One of our teachers continues to undertake her PhD thesis about learning English as an additional language. Two teachers completed ECE degrees and another studied toward her Post Graduate Diploma. Two teachers continued with Level 4 te reo at Wananga o Aotearoa. Professional development was provided internally and externally for all teachers based on goals identified in their appraisal process and emergent interests. Teachers engaged in relevant range of experiences to deepen and strengthen their teaching.

Education Managers' Professional Development

Education Managers as registered teachers themselves continued their commitment to educational leadership.



Attending the International Arts Conference, January 2019.

Teacher Registration programme

We continued to provide a high quality support and guidance programme for our registering teachers. Throughout 2019, two teachers were supported in this programme. This takes the form of termly visits to assess their teaching performance, followed up with a full report and appraisal. The support and guidance programme successfully empowers teachers to meet the NZ Teaching Council's six Professional Standards and the Code of Responsibility. An Education Manager oversees this programme and provides professional learning which includes on site observations and workshops tailored specifically for this group.



Lorelle, now fully registered teacher at Bette Christie

Appraisal for teachers

We embedded the appraisal system in response to ongoing changes from NZ Education Council; now known as Teaching Council of Aotearoa NZ. We have responsibility for overseeing the appraisal process linked to the Kindergarten Professional Standards (2004) and the Education Council, Our Code Our Standards (2017) for all our registered teachers and can report that these were all undertaken to a high standard. The Education Managers themselves successfully completed their own robust appraisals. We aim for a culture of excellence, accountability and continuous improvement.

Whakawhanaungatanga: Teachers engage in partnerships with parents and whānau to promote learning success

An important part of our role is to be regularly in our kindergartens in our capacity as registered teachers – utilising our teaching knowledge to guide and support teams and continue our standards of excellence. Regular work such as Health and Safety audits against the 2008 MOE Regulations criteria (including updates) were completed for all 16 kindergartens. Any outstanding matters were promptly addressed. Each kindergarten received regular visits and observations and reports on teaching practice from us that affirmed our excellent standards. We also met our regulatory requirements by ensuring that first aid training was delivered to new teachers and those renewing their certificates.



Kay Race and her third generation Kindergarten family

Articulating the Kindergarten experience



We have become increasingly aware of the need to 'showcase' kindergarten and communicate the strengths and uniqueness of the kindergarten experience. In January our Eskview teachers did just that at two seminars that had a national and international audience. Their presentation focused on exploring sustainability with children via the Visual Arts. It was very warmly received by academics and teachers.

Jamie Cullen and Anne Tasker present at Victoria University.

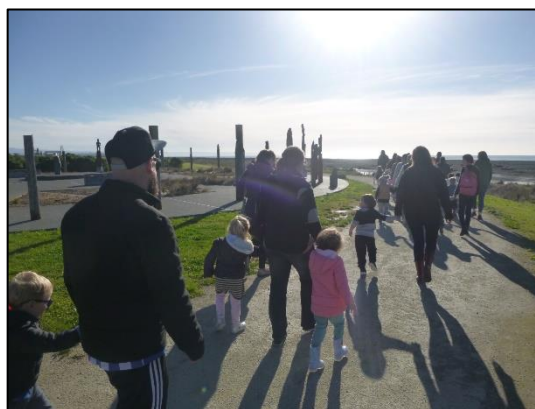
Ako: Every child is empowered by the kaupapa of creating a healthy, peaceful, sustainable world through people teaching and learning together



Piripi Belcher continues to guide teachers in their commitment to Te Tiriti o Waitangi. He is also an accomplished carver (whakairo). As one of our 8 EnviroSchools facilitators he shares his passion for marakai traditional planting methods with teachers and tamariki. This work is woven into our vibrant EnviroSchools programme.

Mara Kai – Hue planting with Piripi

Ngā mihi o te waa o Koanga!
Salutations this time of Spring



Piripi guiding an excursion to Atea a Rangi with NKA tamariki

Summary of ERO Reviews Undertaken in August /September 2019

During August and September all 16 of our kindergartens underwent an onsite visit and review process. In addition, the review included the functions of the management team and the Board and an audit of 22 teacher's appraisal folders. All in all, it was a very intense and thorough examination of our whole Association. Prior to the review the Education Managers prepared teaching teams by providing training, advice, on-site auditing and improvement (where needed) of environments and practices. The reviews are available on line for the general public.

The ERO review findings

The Education Review Office stated in their September 2019 reports:

'The governing board is future focused and has developed a clear strategic direction to meet the diverse needs of its communities. Board members value diversity of viewpoints and gather community and staff voice to inform decision-making. Regular reporting by the education managers is useful in identifying how strategic teaching and learning goals are being addressed.'

Each of our 16 kindergartens received a 'Well Placed' judgement. Compliance with MOE Licensing Criteria was high with 10 kindergartens judged as being fully compliant. Six kindergartens had one or two minor compliance issues often related to needing very precise wording on Excursion forms relating to adult child ratios for the excursion. As Education Managers we were very satisfied with this outcome as the standards of scrutiny by the reviewers was exacting. Each kindergarten received acknowledgment for their particular achievements and strengths.

ERO defines 'Well placed' in the following way:

ERO finds that the service is largely effective in promoting positive learning outcomes for children. Good performance in relation to ERO's evaluation indicators will be evident.

Tangatawhenuatanga: Every child experiences the breadth and depth of a rich local curriculum

Working To Ensure that NKA Remains Sustainable

Towards the end of 2019 we participated in the consultation and problem-solving processes to support the successful restructuring of three of our kindergartens to move to a year-round model of operation. In addition, we have continued to professionally support and guide the Bette Christie team in their first full year of their new model. Alongside our full support for these changes we contributed to marketing strategies for our kindergartens such as writing articles for local papers, planning NKA Open Day and very successful 2-day presence at the Women's Life Style Expo, NKA Christmas tree entry for Salvation Army Christmas Expo, recorded 12 Radio Kidnapper shows, and Facebook post contributions. The Education Managers worked closely with teachers to articulate and project the educational values of kindergarten to our wider Napier community through a variety of interaction and media platforms.



NKA Frozen themed Christmas tree

Looking Ahead to 2020

He taonga te tamaiti Every child a taonga

The 10 year Strategic plan for early childhood 2019-2029 was published in late 2019 after sector engagement. The plan focuses on children's lives 'in the here and now' and their right to enjoy a good life as New Zealanders. Five goals have been established as priorities. Top priorities for the government include the re establishment of a funding rate for 100 % trained teachers by 2022; preventing low quality service providers from opening additional services and improving the adult child ratio for two-year-old children. Announcements are expected in May 2020 defining the ways in which the government may affect delivery on key mandates in the plan i.e.

- Quality is raised for children by improving regulated standards
- Every child is empowered through timely access to the resources they need to thrive
- Investment in our workforce supports excellence in teaching and learning
- Planning ensures that provision is valued sufficient and diverse
- The early learning system continues to innovate learn and improve

Our work in 2020 will see kindergarten continue to provide leadership to the wider early childhood sector as we model and promote quality educational outcomes for children. The NKA strategic plan 2018-2021 will guide our work and reporting.

Ngā mihi

We extend our warmest thanks to all in our learning and teaching community. We embrace the opportunity to thank our own management team and Board of Trustees for the supportive and cohesive base that allows us to function well.

Ehara taku toa, he takitahi, he toa takitini

My success should not be bestowed onto me alone, as it was not individual success but success of a collective

Kia Ora Tatou Katoa

Eileen Kennedy and Beth Huddleston
Education Managers



finance manager's 2019 report

I am delighted to be reporting on the finances of the Association for 2019.

Napier Kindergartens' Financial Statements

Being a not-for-profit charitable organisation and registered with the Charities Commission, a third of any donations made to Napier Kindergartens, may be claimed back by parents from Inland Revenue. Another benefit of having charitable status is that Napier Kindergartens does not have to file an annual income return or pay income tax, we are also exempt from paying tax on interest earned.

To maintain our charitable status, one of the requirements is to file Financial Statements each year with the Charities Commission applying current accounting standards and other pronouncements issued by the External Reporting Board (XRB). As our income is over \$2 million, but below \$30 million, we must meet Tier 2 Reporting Standards.

During 2017 our auditors Oldershaw and Co, advised we were to change one aspect of reporting (consolidation of all association and individual kindergartens' income and expenses) to meet XRB reporting standards. We did so in 2018 and again in 2019. The aim of the XRB is that these standards ensure transparent and consistent external financial reporting that will ultimately build greater trust and confidence with stakeholders. In our situation that would be the Ministry of Education and other government agencies, grant providers and to you, our members.

Page 5 of Financial Statements – Statement of Comprehensive Revenue and Expenses

	2019	2018
Revenue	6,526,099	6,455,207
less Expenses	6,614,706	6,582,808
Surplus / (Deficit)	(88,607)	(127,601)

- 2019 deficit of \$88,607
- 2018 and 2019 deficits = \$216,208

Page 8 of Financial Statement – Statement of Financial Position

	2019	2018
Opening Equity	6,631,814	6,759,415
plus Asset Revaluation	1,464,669	
plus Surplus / (Deficit)	(88,607)	(127,601)
Closing Equity	8,007,876	\$6,631,814

- Revaluation of kindergartens and the association premises took place at the end of 2019 resulting in an increase of \$1,464,669

Page 8 – Working Capital

	2019	2018
Cash and Bank Balance	2,411,191	2,267,324
less Current Liabilities	1,446,680	1,230,749
Working Capital	964,511	1,036,575

	2019	2018
Cash and Bank Balance	71,191	265,324
Short Term Investments	1,090,000	752,000
Investments	1,250,000	1,250,000
Total	<u>2,411,191</u>	<u>2,267,324</u>

- We strive to maintain an investment of \$1,250,000 to cover three months of operation expenditure in the event of a catastrophic event which may otherwise close kindergartens.
- As average monthly expenditure for 2019 equaled \$551,225, 3 months of expenditure is \$1,653,676. We are well short of our target.
- While it appears we have \$2.4 million squirreled away as at 31st December, a large portion of this money is not technically ours at that date.

Cash and Investments		2,411,191
Amounts owing as at 31 st December		
Sundry Creditors – purchases / work in December 2019	21,094	
ASB Visa – purchases in December 2019	8,151	
IRD – the amount we owe re GST	165,391	
Oldershaw & Co – 2019 audit	8,625	
MOE – January and February 2020 funding in advance	966,201	
MOE – overpaid October November December funding	34,338	
Employees Holiday Accrual	<u>242,880</u>	
		1,446,680
Kindergarten Funds		<u>460,458</u>
		<u>1,907,138</u>
Funds Held by Napier Kindergarten as at 31 st December		<u><u>504,053</u></u>

Napier Kindergarten 2019 Budget

Since our funding was cut significantly in 2010, it has become increasingly more difficult to present a budget forecasting a potential surplus or nil balance.

During 2010 and 2011 the following measures were introduced

- Friday became a 6 hour day instead of 4 hours 15 minutes for all kindergartens
- Kindertartens were open for the maximum number of days available to us, taking into consideration the provisions of the KTCA and Holidays Act
- Diversification of the last two sessional kindertartens to All Day Licenses
- When we undertook a kindergarten diversification, we maintained 2 teaching positions as full time and the other position sizes reduced by matching contact and non-contact hours to guidelines set out in the KTCA.

In 2014 Wednesday also became a 6 hour day instead of 4 hours 15 minutes for all kindertartens.

In 2017 the Board approved the introduction of fees for 2 year olds and a request for family donations for children aged 3 - 5 years. This was a challenging option for us, as we had tried so hard for over the previous 8 years, to not pass the cost of the government's funding cuts on to families.

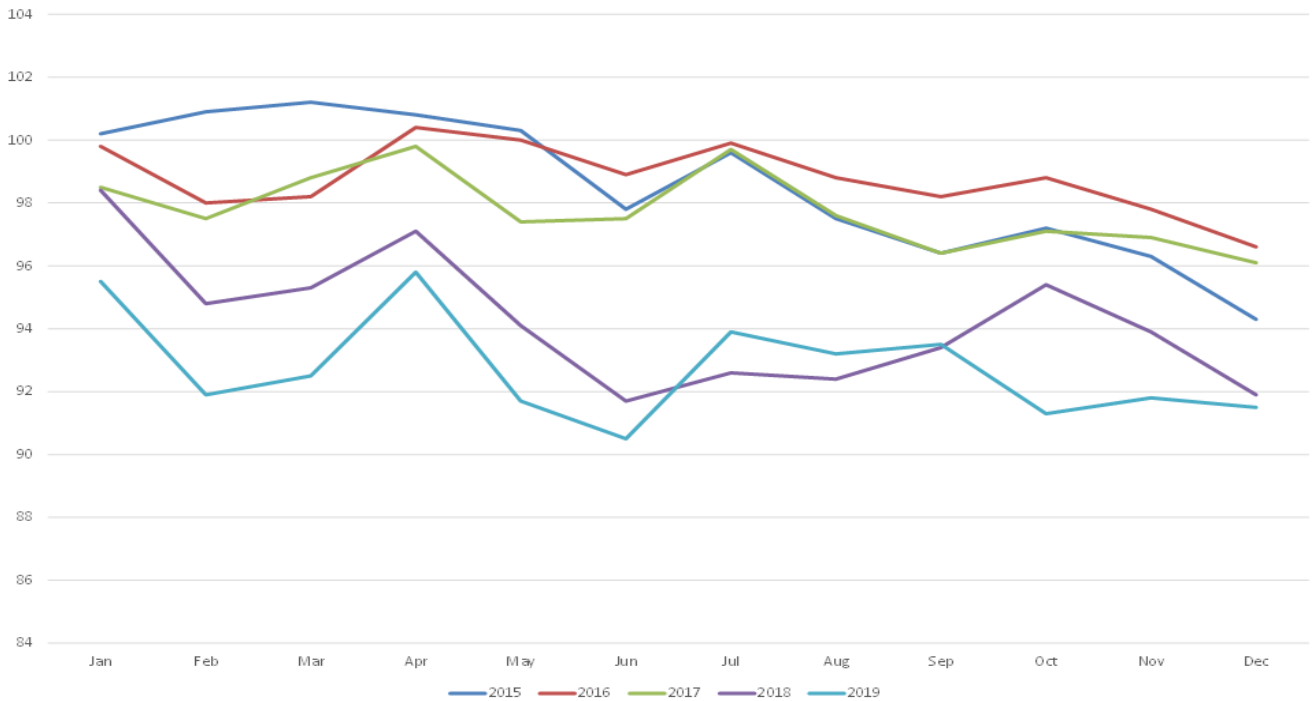
Mid way through 2019, Bette Christie Kindergarten offered an extended day, extended year service.

Despite including anticipated additional funding from Family Donations and Fees, and Bette Christie open in the July and October term break, the 2019 budget forecast still resulted in a \$77,194 deficit.

Kindertartens are not funded the same as schools. Our funding is directly affected by the number of days we are open and whether all child places are filled and/or children's attendance is regular. The number of 2-year olds a kindergarten has, the number of children accessing ECE at another center and paying fees with us, and the number of children accessing more than 20 hours ECE with us, also has an effect on our funding. Government funding makes up 95% of our total income, so any increase or decrease in enrolment levels has a significant impact on our finances.

In 2018 average enrolments were 94%, and steadily declining, so I based 2019 income at 92.8%. The year end average enrolment figure was 92.7%, income of \$5,853,826.

2014 - 2019 Enrolments



It is both interesting and frustrating to note that had our kindergartens all reached 100% enrolment our government funding would have been \$6,314,807, a difference of \$460,981.

Family Donations / Parent Fees

	Family Donations	Parent Fees	Total Unpaid
2019 Requests / Invoices	219,025	201,897	420,922
2019 Payments	<u>101,899</u>	<u>109,066</u>	<u>210,965</u>
Difference	<u>117,126</u>	<u>92,831</u>	<u>209,957</u>

While Napier Kindergartens is a 'not-for-profit' organisation, we cannot afford to be a 'for-loss' organisation either. Any funds accumulated by our Association are held for the direct or indirect benefit of children attending kindergarten – we do not pay out any portion of our funds, as the private sector would, to investors seeking a return on their investment.

\$209,957 unpaid Family Donations and Parent Fees is a considerable amount of money and I know our teaching teams would have been able to do amazing things with it.

How parents can significantly support us is to ensure their children attend kindergarten regularly and encourage other parents to enroll their children at our kindergartens. Parents can also support us by making family donations and paying fees.



Payroll / Settlement of Kindergarten Teacher's Collective Agreement

In any business, payroll is a critical activity and usually one of the largest costs. It is certainly true for our association with payroll being 82% of all expenses. For a few years I was not confident the software I was using was adequate and I was having to do a lot of manual calculations.

During February and March 2019, the process of moving payroll to Datacom took place. Implementation was a considerably bigger job than I was led to believe however completed on time and as there were very few errors in parallel pay runs in March, we made the switch on 1st April. The first pay in April went well. Datacom have an App which provides a range of functions and information for our employees that are pay related.

On 1st April, Inland Revenue introduced changes for filing employee pay information with them and the Ministry of Education who make the employer contributions for our teachers in the State Sector Retirement Savings Scheme requested Kindergarten Association's and Schools take on the ESCT (tax) requirements for the employers contribution, include the reporting to Inland Revenue. We are reimbursed for this.

The kindergarten teacher's collective agreement was settled mid 2019 with 3 pay increases over a 2-year period. Bulk funding rates are increased to cover the cost of the collective increases, however the staff profile in our Association is a different look than the nationwide average, and the rates do not cover the increases in full.

Equity Funding

Equity Funding was set up by the Ministry of Education (MOE) to help kindergartens with low socio-economic, special needs, language and kaupapa, and isolation issues. Every three years MOE look at the RS61 (data collected from kindergartens once a year in July), census information and the decile rating of nearby schools to help them decide which kindergartens qualify for this funding. Equity is 'tagged' and must be spent as per the MOE's key objectives – reducing educational disparities between different groups in NZ communities, reducing barriers to participation and raising levels of educational achievement.

The following is a summary of income from the Ministry of Education's Equity Pool and how the kindergartens eligible for this funding have spent it during 2019.

	BC	Marewa	MR	NTW	Onekawa	Pirimai	Wairoa	WNT	Total
Opening Bal	32284	5944	57558	7876	19600	5329	85161	29024	242776
Income									
Low Soc	35007	8553	29003	11068	7808	7275	24372	25187	148273
Spc Needs	16607	7559	13764	5392	6898	6432	9382	11954	77988
Isolation				3031			3031		6062
Total Inc	51614	16112	42767	19491	14706	13707	36785	37141	232323
Expenditure									
Add Staff	22653	8760	9762	4861		7234	23186	18125	94581
Consumables	2093		2436	2088	2429	2700	2180	1377	15303
Excursions	7596		2363	1390	216	1945	762	2384	16656
N & R Equip	6742	1176	11178	7482	7494	4512	7377	5010	50971
Nourishment	2131	759	548	2852	638	1433	3359	1387	13107
Playground							4458		4458
Prof Dev				183			1394		1577
Repair Equip	318		82		166		78	634	1278
Maori Advisor	10315	3250	8586	3843	2915	2812	7692	7384	46797
Total Exp	51848	13945	35138	22516	13858	20636	50486	36301	244728
Closing Bal	32050	8111	65187	4851	20448	-1600	71460	29864	230371

Targeted Funding

The Government has recognised that 20% of children in ECE have spent the largest portion of their life as the dependent of a beneficiary parent or caregiver and they have created a new pool of funding to support these children. The privacy of the families is protected, so MOE do not identify which children generate the additional funding to our kindergartens. Targeted Funding is 'tagged' and must be spent as per the MOE's key objectives – increasing participation, provide opportunities for children to learn about their culture and to share that with others, meeting the basic needs of children (food and clothing), providing opportunities for health professionals to visit, providing opportunities for children and families to go on excursions and releasing teachers to work one-on-one with children.

The following is a summary of Targeted Funding income and expenditure for 2019.

	BC	Marewa	MR	NTW	Onekawa	Te Awanga	Wairoa	WNT	Total
Opening Bal	1003		797	534	726	0	800	654	5494*
Income	7548	7248	6346	4952	5155	1733	6129	6027	52447
Expenditure									
Basic Needs	211	19	802	99	43		531	282	1987
Excursions	640		222	130	448		902		2342
N & R Equip	380	2949	3130	990	1300	1499	3672	396	14316
Nourishment	151				148				299
Teacher's PD		73		209			104		386
Playground					85				85
Community				725	582		1781		3088
HT Release	6179	4597	5696	1385	1009		853	5602	21704*
Total Exp	7561	3041	9850	3538	3615	1499	7843	6280	44207*
Closing	990	912	-1786	1393	293	234	-1250	-773	13

Pirimai and Tamatea Kindergartens received Targeted funds in 2018 and had closing balances of \$310 and \$670 respectively. These funds were spent in 2019 for Head Teacher release.

Individual Kindergarten Finances

	2019	2018
Operating Funds	75,918	162,517
Equity Funds	230,371	242,776
Fundraising Funds	154,156	151,946
Targeted Funds	13	5,493
Total Funds	\$460,458	\$562,732

Decrease in Funds held by Assn for Kindergartens \$102,274

- A summary of income and expenditure is attached at the back of the AGM booklet.

Kindergarten Grants and Donations - \$16,670

We are grateful to the following trusts / organisations for the grants they have allocated kindergartens so they can undertake larger projects and reduce parent fundraising.

Unfortunately, a number of trusts / organisations are making changes to their funding structures and redefining their funding criteria due to the large volume of grant requests that they are receiving. This is having a negative impact on our requests.

Once again, I need to acknowledge and thank Julie for her amazing work in submitting grant applications, successfully raising \$15,500 for our kindergartens during 2019. She then monitors expenditure of the grant funds received and completes the process; ensuring we comply with the audit requirements of successful grant applications.

	The Lion Foundation	Eastern & Central Community Trust	NZ Community Trust	Kiwanis Foundation Trust	Parents / Community	Total
Bette Christie						0
Carlyle					150	150
Eskview					200	200
Greenmeadows					500	500
Marewa						0
Mary Richmond						0
Ngā Tamariki						0
Onekawa						0
Pirimai					250	250
Riversdale						0
Tamatea						0
Taradale						0
Te Awanga	3000	5000	6000	1500	70	15,570
Wairoa						0
Wharerangi						0
Wycliffe Ngā Tam						0
	3000	5000	6000	1500	1170	16,670



2020 – The Year Ahead

- Our budget for 2020 - \$138,638 deficit approved by the Board in December 2019.
- Riversdale, Wharerangi and Wycliffe Ngā Tamariki Kindergartens – extended year diversifications
- Kindergarten teachers collective bargaining – 2nd increase due July 12th 2020
- And as we go to print, the Governments' post budget announcement of reinstating 100% funding for 100% teacher led services from January 1st 2021.
While this does not have any effect on this year's financial situation, I know I will be presenting 2021 budget with a surplus

Ministry of Education STAT Week

24th June 2019

						2018	2017	2016	2015
Children Enrolled at Kindergarten	685					700	730	741	747
Places	580					595	600	600	600
Average Attendance	440	74.5%				441	487	501	494
Number of 2 Year Olds	91	13.3%				83	56	75	52
Number of 3 4 and 5 Year Olds	594	86.8%				617	674	666	695
Number Giving 20 Hours ECE	580					603	662	641	675
Difference	14					14	12	25	20
No of Girls in Kindergarten	327	47.8%				341	365	378	359
No of Boys in Kindergarten	358	52.3%				359	365	363	388
			685			700	730	741	747
Ages of Children in Kindergarten	91								
2 years	250					83	56	75	52
3 years	329					254	283	259	277
4 years	15					349	377	397	403
5 years			685			14	14	10	15
						700	730	741	747
Ethnicity									
Maori	234	34.2%				220	238	254	264
Tokalau						1	1	1	1
Fijian	1	.1%				2	1		2
Niuean									
Tongan	1	.1%				1		1	
Cook Island Maori	4	.6%				4	2	1	1
Samoan	8	1.1%				8	12	11	12
Other Pacific	1	.1%						1	1
South East Asian	7	1.1%				10	8	6	5
Indian	12	1.8%				11	10	7	11
Chinese	12	1.8%				9	10	9	9
Other Asian	8	1.1%				8	8	10	11
Middle Eastern	3	.5%				8	2	6	6
Latin America	4	.6%				5	3	1	
Africa						2	1	1	1
Other Ethnicity	1	.1%						1	
NZ European	341	49.8%				368	397	401	400
Other European	48	7%				43	37	30	26
			685			700	730	741	747
Hours at Kindergarten									
	2yrs	3yrs	4yrs	5yrs	Total				
Less than 3	1				1				
3 to 6	4	6	7	1	18	25	16	13	28
6 to 9	9	25	3	1	38	38	37	37	33
9 to 12	1	38	24	1	64	55	64	64	72
12 to 15	15	16	3		34	41	31	41	35
15 to 18	11	34	44	1	90	96	102	109	97
18 to 21		3	4		7	6	10	8	2
21 to 24	20	43	71	1	135	143	174	169	186
24 to 27		4	4		8	15	9	12	15
27 to 30	29	79	167	10	285	278	287	288	279
36 to 39	1	2	2		5				
					685	700	730	741	747

Payroll

Year End Statistics

	2019		2018			
Total Payroll		5,290,103		5,260,844		
PAYE		1,091,788		1,066,254		
Student Loans		40,753		44,434		
KiwiSaver - employee		176,124		166,048		
KiwiSaver - employer		94,284		86,669		
KiwiSaver - ESCT		38,709		27,477		
		Males	Females	Males	Females	
Number On Payroll	151	5	146	155	6	149
Ethnicity						
NZ European		2	107	3		108
Maori		1	16	1		18
Other European		1	11	1		15
Asian			4			2
Other		1	8	1		6
Average Age of Teachers			48.8			47.1
25 years and under			1			1
26 – 35 years			5			8
36 – 45 years			20			26
46 – 55 years			26			28
56 – 65 years			18			15
Over 65 years			2			2
			72			80
Eldest Employee			78			77
Total Sick Days Taken by Teachers			558			595.5
Teachers Closing Sick Leave Balance			1566			1758

In addition to thanking the organisations who have contributed funds for kindergarten projects, I also acknowledge and thank

- Ricoh for the free publication of our AGM booklets
- SchoolAppsNZ for the two latest add on modules (at no cost). The Users Module, enabled us to keep in touch with all employees during the Covid-19 Shutdown and the Covid-19 Check-in Module.



Thank you for your time this evening, I am happy to answer any questions you may have.

Leonie Bond
Finance Manager

kindergarten 2019 reports

Bette Christie

Mihi atu ki nga whanau katoa!

Our structure and philosophy

“We value tamariki and whānau through an environment rich in positive learning experiences”.

At Bette Christie Kindergarten change has been the highlight this year with new and exciting challenges. We have opted into diversification with the support and for the benefit of all our tamariki, parents, whānau and community. Extension of hours from 8:30am to 4:00pm and being open all year (except 2 weeks during the Christmas period) has meant that we can focus on more one-on-one learning with tamariki and exploring possibilities of learning. Adapting to change has highlighted the needs of our tamariki which is paramount to their learning.

Over the year we have reviewed the environment to be more child friendly, accessible, and safe such as the setting up of the whānau room as a sleep room. We have reviewed routines to fit our children’s needs such as having breakfast available every day and having a whānau time earlier in the day at 9:30am rather than before lunch. Reviewing these areas through diversification provided opportunities where children have choice as it is empowering and important for them to be able to look after their own needs and be able to focus when needing to. Opening longer hours and open all year provided real benefits, such as smaller groups of children and dedicating more one-on-one teaching and learning. It opened the opportunity to be actively involved in the local community such as going for walks to the Maraenui Shopping Centre, going to the park and establishing ties with our local community. This year we were engaged in a robust Education Office Review amongst all the changes and celebrated our success with the support of our parents, whānau and wider community. We have great initiatives to work on over the next 3 years and look forward to implementing the diversification model over time. We also thank our tamariki, parents, whānau and community for their support and appreciate the open communication and ongoing discussions.



Congratulations to Mitra, Chris and Ruby who were blessed by the arrival of their taonga twin boys and we wish her and her whānau the very best in her busy kainga/home while on maternity leave. Sue had the opportunity to explore life in another Kindergarten for Term Two through to the end of the year and she thoroughly enjoyed this experience returning with a heightened energy of learning. Congratulations to Lorelle on becoming a fully registered Kaiako/Teacher with the support of Olga and our Education Manager Beth. Like a caterpillar she has morphed into an inspirational teacher and we appreciate her being part of the team. Our Eastern Institute Student/Kaiako Julie Maiga had been training with us during 2019. We congratulate her in her graduation and for Tracy’s wonderful mahi in mentoring her during this time. Julie also presented at the EIT Symposium in 2019 with her research project relating to how children’s engagement in their garden would increase their willingness to try new vegetables (an initiative we support through our Enviroschools project). We are very proud of her achievements! In Term 4 we welcomed Tracey Brenssell to the teaching team. Over the year we embraced many opportunities to engage in professional development to support the needs of our tamariki, parents, whānau, kaiako and community.



Our focus this year has always been on communication and we appreciate that it was only possible when working with the professionalism and knowledge of our General Manager, Management team, NZEI and relieving Kaiako.

We look forward to 2020 and remember this whakatauki:

Waiho i te toipoto

Kaua i te toiroa

Let us keep closer together

Not far apart

Carlyle

We have had several younger children joining our session, so have been catering for their needs, especially regarding eating, sleeping and toileting. Our kai routines have been amended to make kai time more formal and communal. We have created an inviting and safe sleeping environment, along with protocols which have been positively supported by older children. The toilet changing facilities have been upgraded making them more user-friendly for teachers and children. Older children have risen to the challenge of having younger children in the sessions with them by creating many successful tuakana – teina situations throughout each day.



The trees around the sandpit were removed opening up the area to more sunshine and air. A front fence (Carlyle Street) was constructed to align with the other fences. Signs were put up on fences advertising the kindergarten costs and session times, which have been very effective for new enrolments. The family play area has been upgraded with new furnishings and equipment with a shift to include natural materials.

Many whānau have been into the kindergarten sharing cultural knowledge, skills and interests.

Neighbourhood walks, the annual disco and fund-raising events have all been well supported by the community.



Eskview

Eskview Kindergarten started 2019 running. Two teachers Anne and Jaime presented and attended an International Arts conference at Victoria University. Our presentation was titled “Rethinking Rubbish”. This presentation was based on our Kindergarten’s EnviroSchool journey in linking the visual arts. We were then invited to present again at Victoria University at their early childhood Autumn Symposium. This time in a workshop capacity for the wider Wellington region early childhood colleagues. By presenting at conferences Eskview Kindergarten was representing the Napier Kindergarten Association and demonstrating leadership in EnviroSchools.

We revamped and up graded our outdoor environment. We replaced our grass with new instant turf, added sand to the sandpit, laid new concrete and re edged our bark area. For the first time Eskview Kindergarten entered the garden of the year competition. We were thrilled to win 1st place in the preschool section. We also revalidated our Gold Healthy heart award.

Individual and group interests play a huge part with our programme planning. One child's interest in cooking and baking ended with setting up our own café. The wider group came on board, menus were devised for the café and food was prepared. Our Kindergarten café was successful with all the children being involved in the play. Another big interest that was followed and extended was movie making. Together the children and teachers wrote the stories, made props, and participated in the filming of two movies. This whole moving making process and experience was very positive. The children were proud of the two movies made and we often revisit them by watching them on our big screen.

Two big visual art projects last year were; our large deconstructed shoe canvas we made and a giant jandel butterfly sculpture.

We are grateful to have an active committee and very supportive wider community.



Greenmeadows

2019 was a busy year as we welcomed a number of two year old children into our kindergarten. We completed an internal evaluation that looked at changes and practices that would need to be implemented to meet their needs and those of their families. During the year we also prepared for an ERO review.

In February, Rachelle spent a term at Tamatea Kindergarten as relieving Head Teacher. During her absence we were fortunate to have Helen van der Werff work alongside us. Teresa and Rachelle continued to work with Napier Kindergartens as EnviroSchool Facilitators. This involved supporting teaching teams in achieving EnviroSchool endeavours. Teresa continued to run ESOL meetings every term, organising speakers and providing resources for those who attended.

Our vision for Greenmeadows Kindergarten continued to be exploring the principles of Enviroschools while ensuring we provided a welcoming environment for our diverse families. Teachers and families attended planting days in the local community. Our children are passionate advocates for their local environment and an excursion was undertaken to Maggie's Way to check on the plants we had grown from seed. We explored many of the children's interests. Metamorphosis, insects, the rocky shore, gardening, superheroes, building and construction and rescue services to name a few. We celebrated Matariki by inviting our whanau to our annual Cultural Evening in June to share kai and to enjoy the children's performance of In the Beginning and our kindergarten waiata. As part of developing closer links with our families we celebrated Chinese New Year, Chile Independence Day and Maori Language Week.



Finally, a big thank you to our very supportive committee who organised successful fundraising events during the year.

Marewa

Tena Koutou Katoa

Our kindergarten is fortunate to have stable staff however during the year we bid farewell to Kay after 20 loyal years as she left to head into retirement. We welcomed Anne Marie into our teaching team.

2019 was another year where the children and their families/whanau further developed their sense of belonging, wellbeing, communication, and exploration. We continued to strengthen our Enviroschools involvement. Activities that linked into this were; continued learning of respect for the living and non living environment through our care code, planting our sunflowers and hue and continuing with our worm farm and compost. At the beginning of the year we installed a water tank for use in our garden.

Our pets play a vital role in all areas of learning and the children learn life-long skills in the care and respect for the living environment.

We continue to add to the children's wealth of knowledge by inviting visiting performers to kindergarten and these have included Trixie the Fairy, Zappo the Magician, the Easter Bunny, Matt the librarian, Animated Soundz with her puppet show, Levity with his recycled musical instruments and finally and most dramatic was Hollie the Elf. We also had visitors from the wider education area to support a variety of children's learning styles such as speech therapists, support workers, teacher aides and group special education.

Further experiences to extend and support the children's learning included celebrating St Patricks Day, St David's Day, a fish and chip luncheon, Sport Hawkes Bay for tabloid sports sessions, music sessions, Poi demonstration, fire officers, an ambulance visit, Matariki celebrations, Christmas celebrations, visits from new entrant teachers, and family barbeque.

At a time when kindergarten enrolments are declining due to the large number of day cares offering longer hours in the area, our kindergarten continues to maintain full rolls. While our maximum roll number on any one day is 40, due to place sharing we have anywhere up to 65 children enrolled to attend on differing days.

To provide the rich learning environment the teachers continually assess, review and plan to ensure the best possible learning outcomes for all tamariki and this was supported by a visit from ERO who reported we were "well placed".

During the year equipment was purchased for many curriculum areas; the largest purchase being a whareniui (blessed in a ceremony). We look forward to 2020 with enthusiasm and passion for teaching our tamariki.

Mary Richmond

2019 was a busy year at Mary Richmond Kindergarten full of fun, learning, joy and exploration as we celebrated different special days, said farewell to children who turned 5 years old and went on to their next learning journey, welcomed new children and their whānau, found exciting ways to gather together as a community and last but not least were reviewed by the Education Review Office.

Some of the wonderful educational activities that we took part in and celebrated were Art Deco, where we all got dressed up, took the Art Deco bus to town and had a fabulous picnic in the gardens beside the Soundshell. We take part in Sea Week each year as this helps us to focus on what we can do to support our oceans and sits well within our Enviroschools programme. We spent a week discussing the importance of keeping our oceans clean and making sure that our rubbish doesn't enter the waterways. This led to introducing litter-less lunch boxes and providing each child with their own bento lunchbox to support this initiative. Our Enviroschools focus moved us to look at ways we could recycle plastic bottle tops, so along with the children we came up with a number of ideas from robots, flowers, dinosaurs, and fish and after a lot of discussing and planning, we all agreed to go with a sea theme and created a whale, which is now on display within the kindergarten.

Matariki is a special time at kindergarten, which culminates with a celebration with whānau. This year we created a few pieces of artwork during Matariki that are now on display within the kindergarten environment. Both pieces of art that we created were made from clay. The first piece of art focused on the nine stars of Matariki and what each star represented and the other piece of art was a collaboration between whānau and children, where parents/caregivers wrote something that was important to them on a clay heart that was then placed in a koru shape. All the children have enjoyed being a part of these and many other art projects throughout the year and we look forward to creating more. These are just a few of the amazing things that we did and yet there is so much more that occurs throughout the year that could not be included in this report. Kindergarten is where learning is fun!



During term three we had two Education Review Officers come and review our programme and planning and I am pleased to say that we received a very good report. As always there are a few recommendations but all the hard work that the team have put into teaching and learning over the last three years was acknowledged and commended.

We would like to thank all the children, whānau and community for supporting us throughout the year and look forward to working alongside you in the coming year.

Ngā Tamariki o Ngā Hau E Whā

It was actually a good exercise for our team reflecting on the highlights of last year as we all had different perspectives.

Our place based trip to Mahia, experiencing a powhiri, being welcomed onto the marae, cleaning up our beaches, visiting the maunga and the awa was a highlight for me as this is also where I am from.

ERO was a wonderful highlight as it was such a positive experience and showcased our philosophy being implemented into the curriculum.

One of our tamariki had a smooth transition from kindergarten into a total immersion Maori class.

Becky and Aira ran workshops in the holidays for science and mindfulness at our Kahui Ako symposium, which received lots of positive feedback. We also ran a successful gala that brought lots of people through our kindergarten. We held a Walkathon which raised money for our kindergarten. Every Friday we attended a P.L.A.Y workshop at the community centre for our tamariki ran by Kahungunu executive which was a physical learning activity to combat against obesity.



Onekawa

Tēnā koutou rau rangatira mā, kua karapinepine mai nei ki tēnei hui ki te wānanga i ngā kaupapa o te tau. Ka nui ngā kupu whakamihi ki a koutou katoa.

Greetings to you the multitude of esteemed people, who have gathered together at this hui to discuss the agenda and plans for the year. Great are these words of acknowledgement to you all.

This past year has been one of strong whānau and community connections for us – whakawhānaungatanga in action! We have hosted some amazing events here at Onekawa kindergarten, and we have been out and about exploring our neighbourhood. Some of our highlights were:

- We were very fortunate to host a kapa haka event where we enjoyed performances from Onekawa School and Napier Central school. Our tamariki responded by singing our own waiata mihi. We were so very proud of their confidence and their mana.
- Our annual Matariki celebration was a huge success again with all our whānau coming along to share kai, dance, discuss Matariki within our kindergarten context, enjoy kapa haka performance by our tamariki and release lanterns into the night sky.
- The tamariki bathroom and toilet areas were metamorphosed into an absolutely gorgeous space for them, and to encourage toileting in a positive way. We also hosted a pyjama day where we provided a delicious cooked breakfast that was kindly cooked by the local Police Community Engagement team. Our whānau all turned up in droves to enjoy breakfast and chat with the teachers and the Police. It was very relaxed and cheerful.
- We would also like to talk about the Mitre 10 Mega competition that we won, where the tamariki were each given a flower pot to paint and plant a vegetable seedling in. They are able to keep them for home with kindergarten keeping the remainder of the seedlings for our own maara kai.

But perhaps our 2 major events this year have been the Art Deco excursion where we went for ride in the Art Deco bus to the Sound Shell for morning tea. This was again very well supported by our whānau who all turned up in their fine attire and played the part well. ☺ Our biggest success would have to be our recent Market Day which was busy all morning with members of the Onekawa community, past and present whānau and kaiako showing up in great numbers. Our local Bidfood company kindly donated fresh produce, ice blocks, the bouncy castle and much more to help make it a huge success, so we would like to acknowledge them. Koia kei a rātou. 'Hūtia te rito o te pū harakeke, kei whea te kōmako e kō.' – We are all dependent on each other and our environment for a better future for all.
Ka nui te mihi ki a koutou



Pirimai

2019 was a busy year here at Pirimai Kindergarten! Our focus this year has been to provide more shade and undercover space for our children to enjoy while playing and learning in our fantastic outdoor environment. Some of our achievements this year have included getting an Archgola and PVC curtains installed and over the summer break we had a canter lever umbrella installed over the sandpit which has meant the children have been able to enjoy the space during the hottest parts of the day. It is really important to acknowledge the hard work that our parent committee and wider kindergarten community put in to all our fundraisers, without their support we would not have been able to complete these big projects.

This year we saw an increase of two year olds attending Pirimai Kindergarten. This meant that we needed to adapt our daily routines and programmes to include their learning needs. This was done with ease and care and we have seen some lovely tuakana teina relationships develop where the older children are looking after the younger children. We have thoroughly enjoyed having our curious, active and energetic two year olds at Pirimai Kindergarten. In August we had a visit from the Education Review Office (ERO). We were really excited to share with them all the wonderful things we have been doing. Our favourite quote from their report is "Children benefit from the child-led, play-based curriculum that encourages them to make choices and follow their interests. Thoughtfully organised outdoor spaces allow them to explore, engage with nature and play independently" (ERO, 2019).

We are proud of what we have been able to achieve for our children and their families during 2019. We will continue to provide an environment that is warm, inviting and a home away from home!



Riversdale

We have had another busy and productive year at Riversdale; full of wonderful learning opportunities for our children and lots of extra events to engage our families and wider community.

Our children continue to enjoy exploring music most weeks with one of our 'music teacher' parents. She has also supported Louis to develop some great guitar skills which has encouraged spontaneous music moments to often be heard throughout our environment. During the winter we celebrated Matariki with a shared meal and Whakatau on 'How Maui Slowed the Sun'- this was following an excursion to Ātea a Rangi/Star Compass. We also hosted other family events including; Mother's and Father's Day breakfasts and our Christmas party. Recently we dressed up in our Art Deco outfits for an excursion on the Hawkes Bay Express followed by a shared lunch.

As part of our 'All About Me' programme which encourages children to keep themselves safe; we invited emergency services in from the community. Last year we hosted the Police (one of our Dad's) and the Fire Service. Our 'park like' grounds continue to be developed. One of our 'landscaping' parents has kindly donated time and plants to make our learning environment even more inviting and promote pockets of play. Our favourite quote from our ERO report in August 2019 was, 'The outdoor environment is thoughtfully organised, offers physical challenge and supports imaginative play. Inviting gardens extend on the sustainability and natural science learning that is a positive feature of the kindergarten.'

We are very thankful for our proactive and supportive committee and all the fundraising projects they put their hand to. We purchased a Canter Lever Umbrella for the sandpit before summer and are currently working towards an Art Mural for our frontage and a concrete path through our vegetable garden.



Tamatea

2019 was full of activity as we prepared for an ERO review that took place in September. This was an opportunity to present our positive achievements and significant progress we have made in our journey towards excellence. Most importantly it allowed us to showcase our teaching and learning, and how through reflective practice, we continue to provide the best learning outcomes for our children. It was satisfying to read in our ERO report that 'many areas identified as strengths in the December 2015 ERO report continue'.



Higher level tertiary study was undertaken by Rachel and Meg who showed a huge commitment to the personal challenge of up skilling and personal enrichment. This meant changes to the teaching team over the year as Rachel moved into a Permanent Relievers role within the Association. Nicky took on a leadership journey by stepping into the relieving Head Teachers role. Having new relieving teachers in the team, with their own expertise and knowledge, provided opportunities to reflect on our practices and led to some spontaneous Internal Evaluation. Running an evening workshop with Ruth Spicer, a Clinical Nutritionist, as part of our morning tea review was greatly received by those who attended.

In 2019 we looked at ways we could better market our kindergarten. Alongside setting up our Facebook page, we started a Kindergarten Playgroup. This has been well received, and is a wonderful way to introduce children on our waiting list to kindergarten. A number of parents with younger siblings also stay, providing a valuable opportunity for whānau to spend time with their children. Several annual events involving parents and whanau promoted our value of a collaborative approach to education. This included a Matariki Disco, Art Deco celebration, Christmas craft evening, Easter fundraiser, and an excursion to Hawke's Bay Farmyard Zoo.



Our significant expenses for the year were topping up our bark and purchasing a fabulous new shade umbrella.

Taradale

The past year has been successful and rewarding for us all. The children at Taradale Kindergarten enjoy a richly resourced, happy and colourful environment to learn in. They have continued to make discoveries, conquer fears, develop relationships, learn strategies for problem-solving, show wonder at nature's diverseness, participate in dramatic and imaginative play, express themselves through dance, movement and music, challenge themselves physically, and most importantly, share laughter, love and happiness.

We continue to receive tremendous support, interest and input from parents, whanau, extended family and the wider Taradale community. Weekly visits from our Story Grans and Carpentry Pop are always popular and special relationships are formed. Our sincere thanks must go to our dedicated and focused committee members. They ran several successful fundraising events during the year, including our much-anticipated Trike-athon, a cake stall, monster raffle and a portrait shoot with Paige Hodson Photography. Money raised from these ventures went towards upgrading our entrance area and purchasing dress-ups, books, puzzles and math games. During term two we were thrilled to have Judy Hunter join us to run the Mind Up programme. Judy visited weekly and taught the children skills to promote resilience, self-control and self-regulation; lifelong skills that will make a lasting difference in our children's lives. We have enjoyed the luxury of a stable teaching team and look forward to the year ahead.

'He waka eke noa'

We are all in this together.

Te Awanga

Our memories of 2019 are of the many opportunities for extending connections with our tūrangawaewae including visits to nearby Haumoana School to connect with their 'Farm to Plate' programme, to attend their school production, to observe stages of a hangi and to support different school sports events. We took a short walk to visit local ceramist, Maggie of MT Pots, where she created us a concrete fish using recycled materials, stopping on the way to pat Jose, a donkey, that lives diagonally across the road from kindergarten and whom we hear frequently. Some of our children proudly brought in pets to show including a lamb, a piglet, ducklings, guinea pigs and puppies. Our rural location provides many opportunities for inquisitiveness with sheep and cattle being moved, horse treks, a range of large vehicles/machinery travelling by, road works and school children on walking excursions all providing moments of wonderment for our children from within our fenced boundaries. As well we enjoyed an excursion to the Omni Gym, Zappo the Magician entertained us mid-year and Kristen, from the Hastings Library, visited regularly to read new stories relating to current themes of interest. We held several dress up days including a 'Knights, Princes and Princesses' day to celebrate Queen's Birthday with a banquet style lunch. We celebrated Chinese New Year, Matariki, Samoan and Cook Island Language weeks and Diwali amongst other cultural experiences and purchased new multicultural dress ups to support these.

Our successful 'Parent Hub' playgroup for children on our waiting list continues to pave a smooth transition for children when they begin kindergarten.



On reflection it was an industrious year with a variety of children's interests extending from the imaginary world of pirates, to the scientific world of robots/robotics, the natural world of seed gathering, growing plants and vegetables as well as the real world of emergency service play, amongst other learning experiences.



Wairoa

2019 at Wairoa Kindergarten was a year of new adventures and recognition by the Education Review Office of the fabulous mahi we do for the tamariki in our care.

First and foremost – sustaining an environment in which aroha is the foundation, so that all who enter are greeted with manaakitanga and children are secure in their mana to learn deeply through their play or alongside a kaiako. We enhanced our place-based curriculum — nurturing our children's sense of kaitiakitanga and love for Papatūānuku through following their interests. This took us to Mahia (digging for pipi and sharing stories of the area); the Waitatia Reserve; the Swann Family farm and our Tsunami Hikoi. We tended to our bountiful gardens and maintained our own 'ngahere.'



ERO wrote, that at Wairoa Kindergarten "Māori children's identities are valued as the foundation for their educational success." They recognised our commitment to Kaupapa Māori – in our everyday activities (our children's enthusiasm for reciting their pepeha at mat time) and our larger events which strengthened our whakawhānaungata. We had tremendous support for all our Matariki celebrations, the Kapa Haka festival, and Whānau Elders' Luncheon. Our kaiako are making a study of Māori Atua as one of our next steps in learning more about te Ao Māori. We understand that as we apply that knowledge in our kindergarten we are facilitating our children's continuity of learning into primary school because many of Wairoa District schools are using Māori Atua in the Mana Enhancement program. And of course, everyone enjoyed celebrating Easter (the Easter bunny had left beautiful Easter Rocks for our children to find around the kindergarten); making prezzies for Mum, Dad and Nana/Poppa for their special days; our ukulele-playing Santa Claus for our Christmas party and our popular Crazy Hair Day.

We had great attendance by parents and whānau for Little Ninja's second education evening where the focus was on Building Resilience in Under Five year olds.

Our morning tea menu expanded, with our Kitchen 'Angel' Schantel making yummy mini hamburgers, real chicken nuggets and other healthy kai.

We have welcomed many new families into the kindergarten and have second generations of Wairoa kindergarten tamariki joining us now. And every day sees our manu Lucky, greeting everyone with his beautiful waiata.



Wharerangi

In 2019 the teaching team completed a twelve month internal evaluation of the kindergartens philosophy. Working through a systematic process the voices of our community were captured and consolidated to create a philosophy emphasizes the value of learning through play, within a calm, engaging and colourful community and supported by nurturing and passionate teachers.

Our daily assessment, planning and evaluation process continues to strengthen our collegial bond and professional understanding. Alongside this the teaching team were mindful of shaping teacher practice and planning for a kindergarten community of two to three and a half year olds.

Through collective and collaborative dialog teachers responses to children's strengths and interests are intentional and purposeful. The key interests for 2019 included construction, dramatic play, creativity and physical movement. In response we purchased a full set of wooden blocks, additional Mobilo parts, family play furniture for the doll's house, new puzzles and balancing stepping stones. Learning highlights incorporated working with and alongside others in the same space, negotiating turn taking and building oral language. Our kindergarten joined the Kahui Ako for the Ahuriri area. This is a cross sector working group from kindergarten to post-secondary. This is a time of celebration and we are excited to be part of the journey as we work together to create a pathway for continuity of learning and forge community connections.

Wycliffe Ngā Tamariki

What a roller coaster of a year it has been for us at Wycliffe Ngā Tamariki kindergarten. We are currently in lockdown and as I write this, we are still not sure what the future holds and when we will get back to doing what we love, which is teaching. Unforeseen illness within our team also challenged us but we came through with a new appreciation for life and this experience brought us and our community even closer.

The year has also had many highlights for us as we provided a curriculum with a rich array of learning experiences for our tamariki. These have included excursions to visit Richmond School and Funky farm. We also welcomed our regular entertainers such as Leivity Beet and Zappo the magician. There has been lots of fun dress up days and pizza lunches. We continued with our fuss free Fridays where we provide a yummy breakfast and relaxing casual morning to end the week. We continue to include yoga and mindfulness within the curriculum.

We celebrated a wonderful Education Review which identified our strength in Te Reo Māori. This year we diversified and are now taking 2 to 5 year olds for six hours a day, five days a week and we are open for approximately 50 weeks over the year. We are really excited about these changes and are thrilled to welcome Whaea Katie to our team. Thank you so much to everyone who has supported us throughout the year.



Kindergarten Performance and Position as at 31 December 2019

	BC	C	E	G	M	MR	NTW	O	P	R	Tam	Tar	Te A	Wai	Wha	WNT	Total	2018
Operating Income																		
Free ECE	7351	23654	25770	33242	31105	21298	19385	31202	14908	29840	31144	27914	26689	15739	31183	15366	385790	477372
Parent Fees	1030	15846	6605	6783	4212	1359	3674	5038	10352	6515	5246	12111	3347	2741	4243	352	89454	72673
Sundry Income																	0	61
WINZ	7144	3175			208	5318	1816	1135	2115	1020	985		1189	7195	1949	2007	35256	41389
	15525	42675	32375	40025	35525	27975	24875	37375	27375	37375	37375	40025	31225	25675	37375	17725	510500	591495
Operating Expenses																		
Bank Fees	43	42	34	51	58	30	54	33	34	43	53	68	30	69	30	76	748	1016
Children's Consumable Play / Pets		2459	2906	3498	3415					1636	1398	2693	1369		2141		21515	24769
Children's Excursions / Entertainment		553	2010	464	2217					1316	1206	4378	749		403		13296	17105
Children's New and Replacement Equip		4635	4950	6558	3433					6498	3536	3159	3035		2986		38790	44674
Children's Nourishment		59			88					48	441		16		167		819	1634
Children's Repairs & Maintenance Equip		699	303	74	261					323	51	354			866		2931	2839
Cleaning	17683	16365	15341	14640	18384	14976	11410	16051	13566	12892	14244	15724	13253	11209	14552	15069	235359	222970
Educational Resources for Teaching Team		274		89	175	97	112	388	96	215		69	92	52	158	143	1960	2091
Electricity	2581	3120	2087	2801	2916	2431	3093	2236	3211	2104	2191	1852	2620	2475	2074	2526	40318	41375
Groceries / First Aid	543	817	965	898	1085	681	975	727	1001	1197	743	421	950	815	1085	1381	14284	15437
Photocopying, Postage and Stationery	2826	3053	2632	2398	3169	2557	2828	3002	2705	3012	2845	2676	2111	3409	2903	2468	44594	47782
Playground		2579	1051					243	13652	16700	1739			10			35974	12907
Rates	283	1226	487	1901	2446	281	481	1928	1676	493	966	1850		1651	491	487	16647	7349
Repairs and Maintenance - Building	754	407	152	653	514	1969	30	10081	181		104	478		224	230		15777	7039
Repairs and Maintenance - Equipment	408		363	442			720	680	202	616	190	86	231	575	107	472	5092	11348
Repairs and Maintenance - Property	3737	3872	8318	2439	5446	6267	5268	6073	4511	4144	5493	4091	3515	5117	5486	5657	79434	84768
Sundry Expenses	189	67	218	186	420	145	525	320	536	700	227	437	164	352	233	159	4878	5937
Telephone and Internet	1525	1355	2274	1553	1625	1464	1430	1335	1632	1456	1563	1683	1406	1461	1629	1292	24683	22389
Total Expenses	30572	41582	44091	38645	45652	30898	26926	43097	43003	53393	36990	40019	29541	27419	35541	29730	597099	573429
Surplus / Deficit	-15047	1093	-11716	1380	-10127	-2923	-2051	-5722	-15628	-16018	385	6	1684	-1744	1834	-12005	-86599	18066
Operating Opening Balance	29427	5182	10248	5694	9898	11759	807	5711	16820	16536	4167	4008	8796	11938	-935	22461	162517	144451
Operating Closing Balance	14380	6275	-1468	7074	-229	8836	-1244	-11	1192	518	4552	4014	10480	10194	899	10456	75918	162517
Equity Funding Income																		
Low Socio Economic	35007				8553	29003	11068	7808	7275					24372		25187	148273	150196
Special Needs	16607				7559	13764	5392	6898	6432					9382		11954	77988	80066
Isolation							3031							3031			6062	6063
	51614				16112	42767	19491	14706	13707					36785		37141	232323	236325
Equity Funding Expenses																		
Additional Teacher / Teacher Aide	22653				8760	9762	4861		7234					23186		18125	94581	63798
Children's Consumable Play / Pets	2093					2436	2088	2429	2700					2180		1377	15303	14727
Children's Excursions / Entertainment	7596					2363	1390	216	1945					762		2384	16656	11930
Children's New and Replacement Equip	6742				1176	11178	7482	7494	4512					7377		5010	50971	61261
Children's Nourishment	2131				759	548	2852	638	1433					3359		1387	13107	12160
Children's Repairs & Maintenance Equip	318					82		166						78		634	1278	3517
Individual PD / HTR						183								1394			1577	391
Pou Whakarewa	10315				3250	8586	3843	2915	2812					7692		7384	46797	47265
Internal Alterations / Playground Dev														4458			4458	411
	51848				13945	35138	22516	13858	20636					50486		36301	244728	215460
Surplus / Deficit	-234				2167	7629	-3025	848	-6929					-13701		840	-12405	20865
Equity Funding Opening Balance	32284				5944	57558	7876	19600	5329					85161		29024	242776	221911
Equity Funding Balance	32050				8111	65187	4851	20448	-1600					71460		29864	230371	242776

	BC	C	E	G	M	MR	NTW	O	P	R	Tam	Tar	Te A	Wai	Wha	WNT	Total	2018
Fundraising Income																		
Donations and Grants		150	200	500					250				15570				16670	16247
Fundraising		2805	4834	4604	3205	1130	3518	2630	4213	3075	479	6536	886		131		38046	41415
Interest	861	290	290	264	311	1085	153	444	225	176	136	125	202	1673	48	754	7037	12074
Sundry Income	445	457	445	444	595	445	8	1525	445	457	465	445	445	272	445	445	7783	-8439
	1306	3702	5769	5812	4111	2660	3679	4599	5133	3708	1080	7106	17103	1945	624	1199	69536	61297
Fundraising Expenses																		
Children's Consumable Play and Pets								25									25	
Children's Excursions / Entertainment							170					256					426	
Children's New and Replacement Equip		1265	487			553	913	2				3206			3088		9514	20795
Children's Repairs & Maintenance Equip															66		66	1159
Playground Development	696		3002	869	1663		112	900	11656	9932	2361	1386	8352	7318			48247	17083
Repairs and Maintenance - Property								1628				1030		4920			7578	8745
Sundry Expenses/Internal Alterations			200	1270													1470	6175
	696	1265	3689	2139	1663	553	1195	2555	11656	9932	2361	5878	8352	12238	3154	0	67326	53957
Surplus / Deficit	610	2437	2080	3673	2448	2107	2484	2044	-6523	-6224	-1281	1228	8751	-10293	-2530	1199	2210	7340
Fundraising Opening Balance	9755	13789	11452	9872	8149	13169	2483	8970	12218	10834	4351	3070	1733	30750	5072	6279	151946	144606
Fundraising Closing Balance	10365	16226	13532	13545	10597	15276	4967	11014	5695	4610	3070	4298	10484	20457	2542	7478	154156	151946
Targeted Funding Income	7548				3953	7267	4397	3182					1733	5793		4853	38726	52447
Targeted Funding Expenses																		
Children's Basic Needs	211				19	802	99	43						531		282	1987	5120
Children's Consumable Play and Pets																	0	240
Children's Excursions / Entertainment	640					222	130	448						902			2342	8249
Children's New & Replacement Equip	380				2949	3130	990	1300					1499	3672		396	14316	9152
Children's Nourishment	151							148									299	662
Community Engagement							725	582						1781			3088	
Individual Professional Development					73		209							104			386	261
Playground Development								85									85	654
Head Teacher Release	6179					5696	1385	1009	310		670			853		5602	21704	22616
	7561				3041	9850	3538	3615	310		670		1499	7843		6280	44207	46954
Surplus / Deficit	-13				912	-2583	859	-433	-310		-670		234	-2050		-1427	-5481	5493
Targeted Funding Opening Balance	1003				0	797	534	726	310		670		0	800		654	5494	
Targeted Funding Closing Balance	990				912	-1786	1393	293	0		0		234	-1250		-773	13	5493
Total Funds	57785	22501	12064	20619	19391	87513	9967	31744	5287	5128	7622	8312	21198	100861	3441	47025	460458	562732

Financial Statements

Napier Free Kindergarten Association Incorporated
For the year ended 31 December 2019

Prepared by Epplett & Co Limited

Contents

3	Board of Trustees Report and Statement of Responsibility
4	Directory
5	Statement of Comprehensive Revenue and Expenses
6	Statement of Changes in Net Assets/Equity
7	Statement of Cash Flows
8	Statement of Financial Position
9	Statement of Accounting Policies
15	Notes to the Financial Statements
23	Audit Report
25	Appendices
26	Depreciation Schedule

Board of Trustees Report and Statement of Responsibility

Napier Free Kindergarten Association Incorporated For the year ended 31 December 2019

Board of Trustees Report

The Board of Napier Free Kindergarten Association present this Annual Report being the Financial Statements of the Association for the Financial Year ended 31 December 2019, and the independent auditors report thereon.

Statement of Responsibility

The Board is responsible for the maintenance of adequate accounting records and the preparation and integrity of the financial statements and related information.

The independent external auditors Oldershaw & Co have audited the financial statements and their report appears on pages 23 - 24.

The Board is also responsible for implementing the systems or internal control. These are designed to provide reasonable but not absolute assurance as to the reliability of the financial statements, and to adequately safeguard, verify and maintain accountability for assets, and to prevent and protect material misstatements

Appropriate systems of internal control have been employed to ensure that all transactions have been executed in accordance with authority and correctly processed and accounted for in the financial records. The systems are implemented and monitored by suitability trained personnel with an appropriate segregation of authority and duties. Nothing has come to the attention of the board indicate that any material breakdown in the functioning of these controls, procedures and systems has occurred during the year under review.

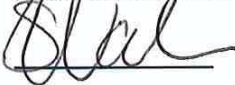
The financial statements are prepared on a going concern basis. Nothing has come to the attention of the Board to indicate that the Association will not remain a going concern in the foreseeable future.

In the opinion of the Board

The statement of comprehensive revenue and expenses is drawn up so as to fairly present the financial result of the Association for the financial year ended 31 December 2019

- The statement of financial position is drawn up so as to fairly present the state of affairs of the association as at 31 December 2019
- There are reasonable grounds to believe that the association will be able to pay its debts as and when they fall due

For and on behalf of the Board of Trustees:



President



Finance Manager

Directory

Napier Free Kindergarten Association Incorporated For the year ended 31 December 2019

Nature of Business

Provision of exceptional, low cost, high quality early childhood education for 2 to 5 year old children

Registered Office

Leonie Bond, 66 Kenedy Road, Marewa, Napier, New Zealand, 4143

Board Members:

Jessica Uri

Rachel Murray

Sarah Nash

Rob Barzey

Ingrid Squire

Alison Donovan

Sarah Beckett (Resigned 3/04/19)

Jo Coffin (Resigned 3/04/19)

Janelle Hutchings (Resigned 3/04/19)

Chartered Accountant

Epplett & Co, Hastings

Auditors

Oldershaw & Co, Napier

Bankers

ASB, Napier

Statement of Comprehensive Revenue and Expenses

Napier Free Kindergarten Association Incorporated For the year ended 31 December 2019

	NOTES	2019	2018
Revenue			
Revenue from Non-exchange Transactions			
Bulk Funding Grant	1	5,853,826	5,722,896
Head Teacher Grant	1	31,888	31,925
Donations and Grants	1	16,670	16,247
Family Donations	1	102,295	114,874
Total Revenue from Non-exchange Transactions		6,004,679	5,885,943
Revenue from exchange transactions			
ECE Targeted Funding	1	39,764	44,955
Fundraising	1	38,047	41,417
Interest Received	1	70,278	79,028
MOE Equity Funding	1	232,071	292,923
Parent Fees	1	94,181	72,673
Sundry Income	1	11,823	(3,125)
WINZ	1	35,256	41,392
Total Revenue from exchange transactions		521,420	569,264
Total Revenue		6,526,099	6,455,207
Expenses			
Administration	2	5,457,183	5,440,535
Kindergarten	2	748,459	686,013
Finance Costs	2	71	791
Fixed Costs	2	100,226	89,414
Professional Development	2	82,393	116,712
Repairs and Maintenance	2	202,707	223,250
Non Cash Expenses	2	23,668	26,094
Total Expenses		6,614,706	6,582,808
Surplus/(Deficit) for the Year		(88,607)	(127,601)

These financial statements and notes must be read subject to the accompanying Audit Report.

Statement of Changes in Net Assets/Equity

Napier Free Kindergarten Association Incorporated
For the year ended 31 December 2019

	ASSET REVALUATION RESERVE	KINDERGARTEN'S EQUITY	ACCUM COMPREHENSIVE REVENUE AND EXPENSES	TOTAL NET ASSETS/EQUITY
Statement of changes in net assets				
2018				
Opening Balance 1 January 2018	4,045,837	380,139	2,333,440	6,759,416
Surplus / (deficit) for the year (Re Stated)	-	-	(127,601)	(127,601)
Closing Equity 31 December 2018	4,045,837	380,139	2,205,839	6,631,815
2019				
Opening Balance 1 January 2019	4,045,837	380,139	2,205,839	6,631,815
Surplus / (deficit) for the year	1,464,669	-	(88,607)	1,376,062
Closing Equity 31 December 2019	5,510,506	380,139	2,117,232	8,007,877

These financial statements must be read in conjunction with the accompanying notes and the Auditor's Report

Statement of Cash Flows

Napier Free Kindergarten Association Incorporated For the year ended 31 December 2019

	2019	2018
Cash Flows from Operating Activities		
Receipts from non-exchange transactions	6,097,343	5,802,402
Revenue from Exchange Transactions	858,122	977,785
GST to IRD	185,656	105,477
Payments to suppliers	(1,938,516)	(2,067,428)
Payments to employees	(5,231,361)	(5,183,922)
Interest paid	(71)	(791)
Total Cash Flows from Operating Activities	(28,826)	(366,476)
Cash Flows from Investing and Financing Activities		
Cash flows from other investing and financing activities	172,693	103,300
Total Cash Flows from Investing and Financing Activities	172,693	103,300
Net Increase/(Decrease) in Cash	143,867	(263,176)
Bank Accounts and Cash		
Opening cash	(1,017,324)	(1,280,501)
Closing cash	(1,161,191)	(1,017,324)
Net change in cash for period	(143,867)	263,176

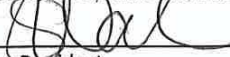
These financial statements must be read in conjunction with the accompanying notes and the Auditor's Report

Statement of Financial Position

Napier Free Kindergarten Association Incorporated As at 31 December 2019

	NOTES	31 DEC 2019	31 DEC 2018
Assets			
Current Assets			
Cash and Cash equivalents			
Bank and cash/(bank overdraft)	3	71,191	265,324
Short Term Deposits	5	1,090,000	752,000
Total Cash and Cash equivalents		1,161,191	1,017,324
Current Receivables & Prepayments	4	116,614	63,072
ASB Interest	4	31,346	78,960
Total Current Assets		1,309,150	1,159,357
Non-Current Assets			
Investments	5	1,250,000	1,250,000
Property, Plant and Equipment	6	6,895,406	5,453,206
Total Non-Current Assets		8,145,406	6,703,206
Total Assets		9,454,556	7,862,562
Liabilities			
Current Liabilities			
Payables & Accruals	7	203,261	171,932
Other payables and accruals	7	1,000,539	832,768
Employee Entitlements	8	242,880	226,049
Total Current Liabilities		1,446,680	1,230,749
Total Liabilities		1,446,680	1,230,749
Net Assets / Equity		8,007,876	6,631,814
Accumulated Funds			
Retained Earnings		2,205,838	2,333,439
Asset Revaluation Reserve	9	5,510,506	4,045,837
Current Year Earnings		(88,607)	(127,601)
Kindergartens Equity Accounts		380,139	380,139
Total Accumulated Funds		8,007,876	6,631,814

For and on behalf of the Board:



President



Finance Manager

These financial statements must be read in conjunction with the accompanying notes and the Auditor's Report

Statement of Accounting Policies

Napier Free Kindergarten Association Incorporated For the year ended 31 December 2019

Reporting Entity

The reporting entity is Napier Free Kindergarten Association Incorporated. The Association is domiciled in New Zealand and is a charitable organisation established under the incorporated Societies Act 1908. The entity is also registered as a charity under Charities Act 2005. The entity is governed by its Board of Management. The principal activity of the Association is the provision of Early Childhood Education.

The financial statements and the accompanying notes summarises the financial results of activities carried out by the association as a group. The principal activity of the Association is the provision of Early Childhood Education. The reporting group consists of the Association, and includes its 16 constituent kindergartens. Revenue & expenses are reported in the financial statements on a consolidation basis.

Statement of Compliance and Basis of Preparation

These financial statements of Napier Free Kindergarten Association Inc have been prepared in accordance with generally accepted accounting practice in New Zealand (NZ GAAP). They comply with Public Benefit Entity International Public Sector Accounting Standards (“PBE IPSAS”) and other applicable financial reporting standards as appropriate that have been authorised for use by the External Reporting Board for Not-For-Profit entities. For the purposes of complying with NZ GAAP, the Association is a public benefit not-for-profit entity and is eligible to apply Tier 2 Not-For-Profit PBE IPSAS on the basis that it does not have public accountability and it is not defined as large.

The Board has elected to report in accordance with Tier 2 Not-For-Profit PBE Accounting Standards and in doing so has taken advantage of all applicable Reduced Disclosure Regime (“RDR”) disclosure concessions. These consolidated financial statements have been approved and were authorised for issue by the Board on 30 April 2020.

Specific Accounting Policies

The following specific accounting policies which materially affect the measurement of the Statement of Comprehensive Revenue and Expenses and Statement of Financial Position have been applied consistently to both years presented in these financial statements.

Income Tax

The Association is not subject to income tax pursuant to the Income Tax Act 2007.

Goods and Services Tax (GST)

Revenues and expenses have been recognised in the financial statements exclusive of GST except that irrecoverable GST input tax has been recognised in association with the expense to which it relates. All items in the Statement of Financial Position are stated exclusive of GST except for receivables and payables which are stated inclusive of GST.

Basis of measurement

These consolidated financial statements have been prepared on the basis of historical cost, as modified by the fair value measurement of investment properties, non-derivative financial instruments and land and buildings which are measured at fair value.

Functional and presentational currency

The financial statements are presented in New Zealand dollars (\$), which is the Association's functional currency. All financial information presented in New Zealand dollars has been rounded to the nearest whole dollar.

Changes in Accounting Policies

There have been no changes to the accounting policies except re-statement of Comparative figures per below:

In prior years, only revenue and expenses of the Association were reported in the Statement of Comprehensive Revenue and Expenses. In the current reporting period, the Board has decided to prepare and present statutory financial statements on a Consolidation basis to fulfil the Charities Services requirements. So, the comparative figures have been restated to show the consolidated figures for the prior year.

Kindergartens equity account has been disclosed as a separate line item in the Statement of Changes in Net Assets/Equity.

Revenue

Revenue is recognised to the extent that it is probable that the economic benefit will flow to the Association and revenue can be reliably measured. Revenue is measured at the fair value of the consideration received. The following specific recognition criteria must be met before revenue is recognised.

Revenue from non-exchange transactions

Government Contracts Revenue

Revenue from government contracts relates to income received from Ministry of Education and is provided as funding for services the Association provides relating to kindergarten and childcare services. Revenue is recognised in the period the services are provided.

Grant Revenue

Grant revenue includes grants given by other charitable organisations, philanthropic organisations and businesses. Grant revenue is recognised when the conditions attached to the grant has been complied with. Where there are unfulfilled conditions attaching to the grant, the amount relating to the unfulfilled condition is recognised as a liability and released to revenue as the conditions are fulfilled.

Donations

Donation Revenue includes voluntary parent donations. This was introduced during the 2017 year.

Revenue from Exchange Transactions

Finance Income

Interest revenue is recognised as it accrues, using the effective interest method.

Rental Income

Rental revenue is recognised when earned.

Kindergartens Trading Accounts

The Trading results; revenue and expenses of the individual kindergartens are shown individually in the appendix. However the current account balances of each Kindergarten has been shown in the Statement of Financial Position.

Financial Instruments

Financial assets and financial liabilities are recognised when the Association becomes a party to the contractual provisions of the financial instrument. The Association derecognises a financial asset or, where applicable, a part of a financial asset or part of a Association of similar financial assets when the rights to receive cash flows from the asset have expired or are waived, or the Association has transferred its rights to receive cash flows from the asset or has assumed an obligation to pay the received cash flows in full without material delay to a third party; and either:

- the Association has transferred substantially all the risks and rewards of the asset; or
- the Association has neither transferred nor retained substantially all the risks and rewards of the asset, but has transferred control of the asset.

Financial Asset

Financial assets within the scope of NFP PBE IPSAS 29 Financial Instruments: Recognition and Measurement are classified as financial assets at fair value through surplus or deficit, loans and receivables, held-to-maturity investments or available-for-sale financial assets. The classifications of the financial assets are determined at initial recognition.

The category determines subsequent measurement and whether any resulting income and expense is recognised in surplus or deficit or in other comprehensive revenue and expenses. The Association's financial assets are classified as financial assets at fair value through surplus or deficit, loans and receivables or as available for sale financial assets. The Association's financial assets include: cash and cash equivalents, short-term deposits, receivables from non-exchange transactions, receivables from exchange transactions and investments.

All financial assets except for those at fair value through surplus or deficit are subject to review for impairment at least each reporting date. Financial assets are impaired when there is any objective evidence that a financial asset or Association of financial assets is impaired. Different criteria to determine impairment are applied for each category of financial assets, which are described below:

Financial assets at fair value through surplus or deficit

Financial assets at fair value through surplus or deficit includes items that are either classified as held for trading or that meet certain conditions and are designated at fair value through surplus or deficit upon initial recognition. All derivative financial instruments fall into this category, except those designated and effective as hedging instruments or a derivative that is a financial guarantee contract.

Loans and Receivables

Loans and Receivables are non-derivative financial assets with fixed or determinable payments that are not quoted in an active market. After initial recognition, these are measured at amortised cost using the effective interest method, less any allowance for impairment. The Association's cash and cash equivalents, receivables from exchange transactions, receivables from non-exchange transactions and advances fall into this category of financial instruments.

Impairment of financial asset

For financial assets carried at amortised cost, if there is objective evidence that an impairment loss on loans and receivables carried at amortised costs has been incurred, the amount of the loss is measured as the difference between asset's carrying amount and the present value of the estimated future cash flows discounted at the financial asset's original effective interest rate. The carrying amount of the asset is reduced through the use of an allowance account. The amount of the loss is recognised in the surplus or deficit for the reporting period.

In determining whether there are any objective evidence of impairment, the Association first assesses whether there is objective evidence of impairment for financial assets that are individually significant or collectively significant for financial asset that are not individually significant. If the Association determines that there is no objective evidence of impairment for an individually assessed financial asset, it includes the asset in a Association of financial assets with similar credit risk characteristics and collectively assesses them for impairment. Assets that are individually assessed for impairment and for which an impairment loss is or continues to be recognised are not included in a collective assessment for impairment.

If in a subsequent period, the amount of the impairment loss decreases and the decrease can be related objectively to an event occurring after the impairment was recognised, the previously recognised impairment loss is reversed by adjusting the

allowance account. If the reversal results in the carrying amount exceeding its amortised cost, the amount of the reversal is recognised in surplus or deficit.

Financial Liabilities

The Association's financial liabilities include trade and other creditors, long term loans, amounts owing to related parties and employee entitlements.

All financial liabilities are initially recognised at fair value (plus transaction costs for financial liabilities not at fair value through surplus or deficit) and are measured subsequently at amortised cost using the effective interest method except for financial liabilities at fair value through surplus or deficit.

Cash and Cash Equivalents

Cash and cash equivalents are short term, highly liquid investments (with maturities of three months or less) that are readily convertible to known amounts of cash and which are subject to an insignificant risk of changes in value.

Short Term Investments

Short term investments comprise term deposits which have a term of greater than three months and therefore do not fall into the category of cash and cash equivalents.

Property, plant and equipment

Recognition & Measurement

Items of property, plant and equipment are initially measured at cost less accumulated depreciation and impairment losses. Cost includes expenditure that is directly attributable to the acquisition of the asset. Where an asset is acquired through a non-exchange transaction, its cost is measured at its fair value as at the date of acquisition.

Subsequent to initial recognition, land and buildings is measured using the revaluation model. Under the revaluation model, land and buildings are measured at fair value (see next page).

Revaluation is performed on a class-by-class basis.

If an item of property, plant and equipment is revalued, the entire class to which the asset belongs is revalued. Valuations are performed with sufficient frequency (normally 5 years) to ensure that the fair value of a revalued asset does not differ materially from its carrying amount. The valuation cycle for revalued asset classes is normally five years.

A revaluation surplus is recorded in other comprehensive revenue and expense and credited to the asset revaluation reserve in equity. A revaluation deficit is recognised in the surplus or deficit, except to the extent that it offsets an existing surplus on the same asset class recognised in the asset revaluation reserve.

Depreciation is charged on a straight line basis over the useful life of the asset, except for land and buildings. Land and buildings are not depreciated. Depreciation is charged at rates calculated to allocate the cost or valuation of the asset less any estimated residual value over its remaining useful life:

- Motor vehicles 26-36%

- Property Improvements 0-2.5%

- Plant & Computer equipment 15-60%

Depreciation methods, useful lives and residual values are reviewed at each reporting date and are adjusted if there is a change in the expected pattern of consumption of the future economic benefits or service potential embodied in the asset.

Revaluation of property, plant and equipment

The Association measures land and buildings at revalued amounts with changes in fair value being recognised in other comprehensive revenue and expense.

The Association engaged an independent valuation specialist (Lawson Valuation Limited) to assess the depreciated replacement cost at 29 December 2019 for land and buildings. Land and buildings were valued by reference to market-based evidence, using comparable prices adjusted for specific market factors such as nature, location and condition of the property.

Leases

Payments on operating lease agreements, where the lessor retains substantially the risk and rewards of ownership of an asset, are recognised as an expense on a straight-line basis over the lease term.

Significant judgements and estimates

In preparing the financial statements, the Board is required to make judgments, estimates and assumptions that affect the reported amounts of revenues, expenses, assets and liabilities, and the disclosure of contingent liabilities at the end of the reporting period. The uncertainty from these assumptions and estimates could result in outcomes that may result in a material adjustment to the carrying amount of the asset or liability.

The Association base its assumptions and estimates on parameters available when the financial statements are prepared. However, existing circumstances and assumptions about future developments may change due to market changes or circumstances arising beyond the control of the Association. Such changes are reflected in the assumptions when they occur. The key significant judgements and estimates used in the preparation of these financial statements are detailed below.

(a) Judgements

Judgements made in applying accounting policies that have had the most significant effects on the amounts recognised in the consolidated financial statements include the following:

Revenue recognition - non-exchange revenue (conditions vs restrictions)

Classification of lease arrangements

(b) Assumptions and estimation uncertainties

Assumptions and estimation uncertainties that have a significant risk of resulting in a material adjustment in the year ending 31 December 2018 are made up of the following:

Useful lives and residual values - property, plant and equipment; are based on:

- The condition of the asset based on it assessment of the Board
- Availability of the funding to Replace the asset
- Changes in the market in relation to the asset
- The nature of the Asset, its susceptibility and adaptability to changes in technology and processes

Employee Entitlements

Employee entitlements include wages, salaries, annual leave and sick leave Liabilities for wages and salaries, annual leave and accumulating sick leave.

Short term employee benefit liabilities are recognised when the association has a legal or constructive obligation to remunerate employees for services provided with 12 month of reporting date, and is measured on an undiscounted basis and expenses in the period in which employment services are provided.

Long Term employee benefits obligations are recognised when the association has a legal or constructive obligation to remunerate employees after 12 month of reporting date. The association did not have any long term employee benefits during the current financial period.

Notes to the Financial Statements

Napier Free Kindergarten Association Incorporated For the year ended 31 December 2019

	2019	2018
1. Revenue		
Revenue from Non-Exchange Transactions		
Bulk Funding Grant	5,853,826	5,722,896
Head Teacher Grant	31,888	31,925
Donations and Grants	16,670	16,247
Family Donations	102,295	114,874
Total Revenue from Non-Exchange Transactions	6,004,679	5,885,943
Revenue from Exchange Transactions		
ECE Targeted Funding	39,764	44,955
Fundraising - GST	11,481	9,714
Fundraising - No GST	26,566	31,703
Interest Received	70,278	79,028
MOE Equity Funding	232,071	292,923
Parent Fees	94,181	72,673
Sundry Income	11,823	(3,125)
WINZ	35,256	41,392
Total Revenue from Exchange Transactions	521,420	569,264
Total Revenue	6,526,099	6,455,207
	2019	2018

2. Expenses

Administration Expenses

Accident Compensation Corporation	31,339	32,361
Accounting Fees	11,806	12,660
Admin Professional Development	-	7,668
Advertising and Promotion	16,146	19,793
AGM Expenses	2,244	877
Appointment Expenses	14	4,284
Audit Fees	10,475	10,000
Bank Fees	1,008	1,305
Board Expenses	7,928	3,421
Board Fees	3,465	3,553
Board Professional Development	7,091	21,222
Cleaning	245,092	232,445
Contract Legal Expenses	4,585	2,145
Electricity	44,552	45,588
Entertainment	2,427	1,795
Maternity	6,223	4,484
Networking	74	-
NZKI Levy	14,850	14,850

These financial statements must be read in conjunction with the accompanying notes and the Auditor's Report

	2019	2018
NZKI Tiki Atu Consultation	5,217	-
Occupational Safety and Health	946	4,589
Office Supplies	1,495	1,347
Payroll Administration	16,601	3,755
Personnel Welfare	859	3,429
Photocopying	8,938	9,363
Postage	569	319
Relievers	261,729	332,729
Relievers Expenses	1,494	1,222
Salaries	4,685,992	4,602,851
Staff Professional Supervision	-	1,825
Stationery	2,386	929
Sundry Expenses	8,264	11,604
Telephone and Internet	34,798	32,381
Travel	9,380	9,986
Travel - Wairoa	2,696	5,755
Valuations	6,500	-
Total Administration Expenses	5,457,183	5,440,535
Kindergartens		
Additional Teacher / Teacher Aide	78,931	67,337
Children's Consumable Play and Pets	36,869	39,738
Children's Excursions and Entertainment	32,856	37,285
Children's New and Replacement Equipment	113,762	135,801
Children's Nourishment	14,223	14,456
Children's Basic Needs	1,985	5,120
Children's Repairs & Maintenance Equipment	4,272	7,513
Cleaners Wages	713	(5)
Community Engagement	3,088	-
Computer Software Support	8,047	7,359
Donation to Kindergarten	-	(9,766)
Educational Resource for Teaching Team	1,960	2,092
Groceries and First Aid	14,293	15,438
Kindergarten Computer Maintenance	4,123	175
Kindergarten Support	300,894	250,965
Magnets	131	1,167
Photocopying, Postage and Stationery	44,595	47,780
Playground Development	88,762	27,171
Teacher Aide	(1,044)	36,386
Total Kindergartens	748,459	686,013
Finance Expenses		
Interest	71	791
Total Finance Expenses	71	791
Fixed Costs		
Insurance	68,465	65,140

These financial statements must be read in conjunction with the accompanying notes and the Auditor's Report

	2019	2018
Life Insurance Cover	12,836	13,775
Rates	18,924	10,499
Total Fixed Costs	100,226	89,414
Professional Development		
Conference	-	25,019
EM Conferences and Meetings	(107)	6,998
EM Resources	173	114
EM Travel	3,718	5,379
Enviroschools	6,467	8,903
First Aid	3,231	2,533
Head Teacher Release	50,001	31,742
In House Professional Development	225	6,116
Individual PD Relievers	5,706	11,557
Individual Professional Development	8,854	11,379
Performance Appraisals	-	2,440
Staff Meetings - Teachers	1,140	1,954
Subscriptions	270	539
Teachers Study Grant	2,513	1,643
T-Shirts / Name Badges	-	96
Vaccinations	203	299
Total Professional Development	82,393	116,712
Repairs and Maintenance		
Bette Christie	1,585	284
Carlyle	-	119
Greenmeadows	254	2,308
Marewa	-	143
Mary Richmond	193	110
Nga Tamariki o Nga Hau E Wha	950	-
Onekawa	351	763
Pirimai	34	1,750
Riversdale	172	2,020
Tamatea	80	350
Taradale	-	175
Te Awanga	435	213
Wharerangi	550	2,420
Wycliffe Nga Tamariki	29	-
Cabins	14,470	14,748
Electrical Check	-	3,450
Fire Service Check	10,616	12,170
Heat Pump Servicing	2,152	2,633
Internal Alterations	1,270	6,438
Maintenance Wages	2,094	2,142
Painting - Exterior	27,383	16,035
Repairs and Maintenance - Building	19,724	27,397

These financial statements must be read in conjunction with the accompanying notes and the Auditor's Report

	2019	2018
Repairs and Maintenance - Equipment	5,993	12,233
Repairs and Maintenance - Property	86,568	94,811
Security	25,433	20,453
Vandalism	2,373	84
Total Repairs and Maintenance	202,707	223,250

Depreciation

Depreciation	23,668	26,094
Total Depreciation	23,668	26,094
Total Expenses	6,614,706	6,582,808

	2019	2018
--	------	------

3. Cash and Cash Equivalents**Bank accounts and cash**

NKA 00	62,203	259,248
NKA 50	6,709	2,893
Maintenance Account	2,248	3,153
Petty Cash on Hand	30	30
Total Bank accounts and cash	71,191	265,324

	2019	2018
--	------	------

4. Current Receivables & Prepayments**Accounts Receivable**

Accounts Receivable	3,398	1,625
Prepayments	50,331	50,264
Bulk Funding Washup Due	-	11,184
Total Accounts Receivable	53,729	63,072

Accrued Income

MOE Equity Funding Due	62,885	-
ASB Interest	31,346	78,960
Total Accrued Income	94,231	78,960

Total Current Receivables & Prepayments	147,959	142,032
--	----------------	----------------

	2019	2018
--	------	------

5. Current Investments

Short Term Deposits	1,090,000	752,000
Investments (Term Deposits)	1,250,000	1,250,000
Total Current Investments	2,340,000	2,002,000

The Board goal is to maintain investments at no less than 3 months of operating expenditure. This will ensure the ability of the Association to continue to provide ECE services to children in the event of an unforeseen delay in receipt of MOE funding and other income. The Board has further directed that investments be held for the maintenance of 15 NKA kindergartens and Association over the next 5 years.

6. Property Plant and Equipment

	Properties Owned by NFKAI	Properties Owned by MOE	Leasehold Properties from NCC	Unknown	Motor Vehicles	Plant & Equipment	Total
	\$000	\$000	\$000	\$000	\$000	\$000	\$000
2019							
Cost/Valuation	1,202	2,458	3,580	-	11	244	7,505
Accumulated	175	95	105	-	5	227	607
Depreciation	4	5	8	-	1	5	24
Net book Value	1,024	2,358	3,467	-	5	12	6,895
2018							
Cost/Valuation	671	1,748	2,783	238	11	241	5,702
Accumulated	1	5	9	4	2	5	25
Depreciation	1	5	9	4	2	5	26
Net book Value	670	1,743	2,784	234	6	14	5,453
Reconciliation of the carrying amount at the beginning to the end of the period:							
	Properties Owned by NFKAI	Properties Owned by MOE	Leasehold Properties from NCC	Unknown	Motor Vehicles	Plant & Equipment	Total
	\$000	\$000	\$000	\$000	\$000	\$000	\$000
Opening balance	670	1,743	2,784	234	6	14	5,451
Additions	176	652	738	-	-	-	3,468
Adjustment Transfer	182	98	(46)	(234)	-	-	-
Depreciation	4	5	8	-	1	5	24
Net book Value	1,024	2,358	3,467	-	5	12	6,895

Land & Buildings comprise of 16 fully operational, purpose build and licenced Kindergartens and 3 associated administration buildings. These are considered Specialised buildings and are specifically designed for educational purposes only. They are valued using depreciated replacement cost because no reliable market data is available for such buildings. Depreciated replacement cost is determined using a number of significant assumptions as per report provided by Lawson Valuation Limited.

The most recent valuations of buildings and infrastructure were performed as at 29 December 2019 using an independent valuer, Michael Lawson of Lawson Valuation Limited. This valuation has been completed in accordance with the Australia and New Zealand valuation Guidance Note 13- Valuations for Insurance Purposes IVS 103 Valuation Reporting, and property institute of New Zealand valuation Guidance Note 1- Valuation Procedures for Real Property. The valuation report has been prepared having regard to the International Valuation Standard 3 of the New Zealand and Australia Valuation and property standards 2009.

In estimating the fair value of land and buildings, following methods of valuations were considered:

1. The Depreciated Replacement Cost Approach
2. Reinstatement values

which incorporated the use of the following significant assumptions:

- Straight-line depreciation has been applied in determining the depreciated replacement cost value of the asset.
- Those kindergartens located on Ministry of Education (MOE) land are subject to the terms and conditions of the Property Occupancy Document.
- Those kindergartens located on Napier City Council (NCC) land are subject to the terms and conditions of the Deed of Lease.
- The valuations exclude any discount or loss in value that would occur as a result of an oversupply situation, in the event of all or several of the kindergartens being made available for sale or exchange at the same time.
- Upon expiry or earlier termination of either the NCC lease or MOE property occupancy document the buildings remain the property of the Napier Free Kindergarten Association Incorporated (NFKAI) and can be removed from the property for relocation or sale.
- The kindergartens are occupied for the purpose of the NFKAI's business and the assets will continue to be used as part of the NFKAI business of which they form part or will be used for another similar use.

Apart from the administration office site at 62 & 66 Kennedy Rd, Napier and the kindergarten in Freyberg Street, Wairoa, the buildings stand on land owned by the Napier City Council or land owned by the Ministry of Education. All the site improvements and chattels are all owned by the NFKAI. The entity has the long term use of Land & Buildings and bear all the running costs of the properties such as R&M, rates and insurance.

There is no formal lease documents relating to all the properties, the ground tenure of which is in the form of either a Napier City Council Deed of Lease (DOL) of Reserve or a Ministry of Education Property Occupancy Document (POD). The assessed details areas follows:

Napier City Council Lease

Term: 15 years from 1 July 2013

Rental: \$1.44 including GST per sqm of land.

Rent Reviews: Annually, Annual rent is based on Council having regard to Council's Management Plan for recreation reserves and any other Council policies. The NFKAI is required to maintain all buildings, fences, gates, drains and other improvements on, around or through the said land in good repair.

Right of Renewal: 1 x 15 year term from 1 July 2028.

MOE Property Occupancy Document

Those properties not owned by the Napier Free Kindergarten Association Incorporated or held under leasehold to the Napier City Council are held under the terms and conditions of the MOE Property Occupancy Document (POD). This is not a lease in the normal sense but rather an agreement between the Secretary for Education, known as The Secretary, and Centre Management who is the legal entity to whom this property occupancy document is issued and who manage the kindergartens.

The salient points of the property occupancy document are as follows:

Term: No set term

Occupancy Fee: \$10.00 per annum.

Rent Reviews: Notified from time to time by The Secretary to Centre Management.

Right of Renewal: nil

Outgoings: Payable by Centre Management. Centre Management shall repair and maintain the buildings and facilities. The secretary may cancel the P.O.D by giving not less than 120 days written notice to Centre Management. The Secretary may permit Centre Management to remove buildings and facilities from the land on such condition the Secretary may deem appropriate.

	2019	2018
7. Payables and Accruals		
Payables and Accruals		
Accounts Payable		
PAYE Payable	-	(895)
Accounts Payable	21,094	18,147
GST	165,391	133,779
Visa Cards	8,151	12,275
Provision for Audit Fees	8,625	8,625
Total Accounts Payable	203,261	171,932
Other Payables and Accruals		
Bulk Funding in Advance	966,201	832,768
Bulk Funding Washup	34,338	-
Total Other Payables and Accruals	1,000,539	832,768
Total Payables and Accruals	1,203,800	1,004,700
	2019	2018

8. Employee Entitlements

Provision for Holiday pay		
Balance at the beginning of the year	226,048	192,140
Additional (Reduced) Provision	16,832	33,909

These financial statements must be read in conjunction with the accompanying notes and the Auditor's Report

This is represented by:	-	-
Balance at end of year	242,880	226,048
	2019	2018

9. Reserves

Asset Revaluation Reserve	(5,510,506)	(4,045,837)
Total Reserves	(5,510,506)	(4,045,837)
	2019	2018

10. MOE Operations Grant Analysis by Kindergarten

Bette Christie	367,443	310,473
Carlyle	417,765	375,613
Eskview	383,833	367,576
Greenmeadows	449,148	421,777
Marewa	457,437	426,439
Mary Richmond	306,685	293,548
Nga Tamariki o Nga Hau E Wha	266,210	287,214
Onekawa	410,417	393,323
Pirimai	375,336	403,509
Riverside	347,654	377,965
Tamatea	373,037	399,139
Taradale	464,570	440,727
Te Awanga	279,032	246,984
Wairoa	331,902	369,789
Wharerangi	349,443	351,895
Wycliffe Nga Tamariki	268,016	256,925
Uncategorised	5,898	-
Total MOE Operations Grant Analysis by Kindergarten	5,853,826	5,722,896

11. Related Party Transactions

(a) Board Members:

There are no related party transactions with Board Members during the year. No remuneration is paid to any Board Members.

(b) Key Management Personnel:

NKA classifies its key management personnel into two classes:

- Members of the governing body
- Management team, responsible for reporting to the governing body

Members of the governing body were paid an annual fee of \$5,410 in total for honoraria and for meetings attended during the period (2018 :\$11,996).

The Management Team (numbering 4 FTE's) are employees of the NKA, on normal employment terms. The Management Team were paid annual salaries of \$374,996 (2018: \$387,244).

12. Contingent Liabilities

There are no contingent liabilities or guarantees as at 31 December 2019 (Last year - nil).

13. Capital Commitments

The Association has no capital commitments as at 31 December 2019 (Last year - nil).

14. Events After the Balance Date

There were no events that have occurred after the balance date that would have a material impact on the Performance Report (Last year - nil).

Marewa House, PO Box 4151,
Marewa, Napier 4143, New Zealand

Telephone (06) 843-3058

Fax (06) 843-3316

www.oldershaw.co.nz

Email mailbox@oldershaw.co.nz

INDEPENDENT AUDITOR'S REPORT

To the Members of Napier Free Kindergarten Association Incorporated

Opinion

We have audited the financial statements of Napier Free Kindergarten Association Incorporated on pages 5 to 22, which comprise the statement of financial position as at 31 December 2019, and the statement of comprehensive income, statement of changes in equity and statement of cash flows for the year then ended, and notes to the financial statements, including a summary of significant accounting policies.

Our opinion on the financial statements does not cover the other information provided in the annual report and we do not express any form of opinion or assurance conclusion thereon.

In our opinion, the accompanying financial statements present fairly, in all material respects, the financial position of Napier Free Kindergarten Association Incorporated as at 31 December 2019, and its financial performance and its cash flows for the year then ended in accordance with Public Benefit Entity Standards Reduced Disclosure Regime issued by the New Zealand Accounting Standards Board.

Basis for Opinion

We conducted our audit in accordance with International Standards on Auditing (New Zealand) (ISAs (NZ)). Our responsibilities under those standards are further described in the Auditor's Responsibilities for the Audit of the Financial Statements section of our report. We are independent of Napier Free Kindergarten Association Incorporated in accordance with Professional and Ethical Standard 1 (Revised) Code of Ethics for Assurance Practitioners issued by the New Zealand Auditing and Assurance Standards Board, and we have fulfilled our other ethical responsibilities in accordance with these requirements. We believe that the audit evidence we have obtained is sufficient and appropriate to provide a basis for our opinion.

Other than in our capacity as auditor we have no relationship with, or interests in, Napier Free Kindergarten Association Incorporated.

Board of Trustees' Responsibility for the Financial Statements

The Board of Trustees are responsible on behalf of the entity for the preparation and fair presentation of the financial statements in accordance with Tier 2 PBE, and for such internal control as the Board of Trustees determine is necessary to enable the preparation of financial statements that are free from material misstatement, whether due to fraud or error.

In preparing the financial statements, the Board of Trustees are responsible on behalf of the entity for assessing the entity's ability to continue as a going concern, disclosing, as applicable, matters related to going concern and using the going concern basis of accounting unless the Board of Trustees either intend to liquidate the entity or to cease operations, or have no realistic alternative but to do so.

Board of Trustees are responsible for the Other Information. The Other Information comprises the information included in the Annual Report, but does not include in the financial statements and our auditor's report thereon.

Auditor's Responsibilities for the Audit of the Financial Statements

Our objectives are to obtain reasonable assurance about whether the financial statements as a whole are free from material misstatement, whether due to fraud or error, and to issue an auditor's report that includes our opinion. Reasonable assurance is a high level of assurance, but is not a guarantee that an audit conducted in accordance with ISAs (NZ) will always detect a material misstatement when it exists. Misstatements can arise from fraud or error and are considered material if, individually or in the aggregate, they could reasonably be expected to influence the decisions of users taken on the basis of these financial statements.

A further description of the auditor's responsibilities for the audit of the financial statements is located at the XRB's website at www.xrb.govt.nz/standards-for-assurance-practitioners/auditors-responsibilities/audit-report-8/.

Emphasis of Matters

As set out in the accounting policies for Property, Plant and Equipment and in the note 6 of the Financial Statements, Land and Buildings were disclosed and revalued using depreciation replacement cost as the buildings of Kindergartens are specialised buildings and no reliable market data is available for valuations. The financial statements comply with the requirements of PBE IPSAS 17 Property, Plant and Equipment for revaluing its land and buildings. Many of the Land and Buildings are not owned by Napier Free Kindergarten Association Incorporated refer to Note 6 for the details.

Signed:

OLDERSHAW & Co.

Oldershaw & Co,
Napier
1 May 2020

Appendices

Napier Free Kindergarten Association Incorporated For the year ended 31 December 2019

1. Consolidated Statement Detail
2. Individual Kindergarten Reports

Profit and Loss - Operational

Napier Free Kindergarten Association

For the year ended 31 December 2019

	2019	2018
Income		
Bulk Funding Grant	5,856,078	5,722,896
Head Teacher Grant	31,925	31,925
Family Donations	102,295	114,874
Interest Received	31,896	66,953
Pou Whakarewa Matauranga	46,797	47,265
Parent Fees	4,727	
Sundry Income	4,038	6,249
Gross Profit	6,077,757	5,990,162

Profit and Loss - Operational

Napier Free Kindergarten Association

For the year ended 31 December 2019

	2019	2018
Expenses		
Administration Expenses		
Accident Compensation Corporation	31,222	32,361
Accounting Fees	11,423	12,660
Admin Professional Development		7,668
Advertising and Promotion	15,799	19,793
AGM Expenses	2,204	877
1+1 Initiative	0	0
Appointment Expenses	14	4,284
Audit Fees	10,475	10,000
Bank Fees	262	285
Board Expenses	7,928	3,421
Board Fees	3,465	3,553
Board Professional Development	7,091	21,222
Cleaning	9,488	9,475
Contract Legal Expenses	4,585	2,145
Electricity	3,991	4,211
Entertainment	2,427	1,795
Maternity	6,223	4,484
Networking	74	
NZKI Levy	14,850	14,850
NZKI Provision	5,217	
Occupational Safety and Health	946	4,589
Office Supplies	1,214	1,347
Payroll Administration	15,893	3,755
Personnel Welfare	859	3,429
Photocopying	8,441	9,363
Postage	569	319
Relievers	258,094	332,729
Relievers Expenses	1,447	1,222
Salaries	4,671,717	4,602,851
Staff Professional Supervision	0	1,825
Stationery	2,386	929
Sundry Expenses	3,178	2,045
Telephone and Internet	9,359	9,989
Travel	9,318	9,986
Travel - Wairoa	2,696	5,755
Valuations	6,500	
Total Administration Expenses	5,129,356	5,143,219

Profit and Loss - Operational

Napier Free Kindergarten Association

For the year ended 31 December 2019

	2019	2018
Finance Expenses		
Interest	71	791
Total Finance Expenses	71	791
Fixed Costs		
Insurance	70,164	65,140
Life Insurance Cover	12,836	13,775
Rates	3,244	3,151
Total Fixed Costs	86,243	82,065
Kindergartens		
Children's Consumable Play and Pets	25	
Children's Excursions and Entertainment	136	
Children's New and Replacement Equipment	172	
Cleaners Wages	551	(5)
Computer Software Support	8,047	7,359
Donation to Kindergarten		(9,766)
ECE Grant to Kindergartens	385,790	477,373
Groceries and First Aid	9	
Kindergarten Computer Maintenance	4,123	175
Kindergarten Support	301,207	250,965
Magnets	131	1,167
Teacher Aide		36,386
Total Kindergartens	700,190	763,656
Professional Development		
Conference		25,019
EM Conferences and Meetings	(623)	6,998
EM Resources	173	114
EM Travel	3,553	5,379
Enviroschools	6,467	8,903
First Aid	3,231	2,533
Head Teacher Release	12,461	12,665
In House Professional Development	225	6,116
Individual PD Relievers	5,706	11,557
Individual Professional Development	5,529	10,727
Performance Appraisals		2,440
Staff Meetings - Teachers	1,140	1,954
Subscriptions	270	539
Teachers Study Grant	2,513	1,643
T-Shirts / Name Badges	0	96
Vaccinations	203	299
Total Professional Development	40,848	96,984

Profit and Loss - Operational

Napier Free Kindergarten Association

For the year ended 31 December 2019

	2019	2018
Repairs and Maintenance		
Bette Christie	1,585	284
Carlyle	0	119
Eskview	0	
Greenmeadows	254	2,308
Marewa	0	143
Mary Richmond	193	110
Nga Tamariki o Nga Hau E Wha	950	
Onekawa	351	763
Pirimai	34	1,750
Riversdale	172	2,020
Tamatea	80	350
Taradale	0	175
Te Awanga	435	213
Wairoa	0	
Wharerangi	550	2,420
Wycliffe Nga Tamariki	29	
Painting - Exterior	14,671	16,035
Cabins	14,470	14,748
Electrical Check	0	3,450
Fire Service Check	10,616	12,170
Heat Pump Servicing	2,152	2,633
Maintenance Wages	2,094	2,142
Repairs and Maintenance - Building	2,219	20,359
Repairs and Maintenance - Equipment	899	885
Repairs and Maintenance - Property	1,186	1,298
Security	23,710	20,453
Vandalism	6,017	84
Total Repairs and Maintenance	82,665	104,913
Non Cash Expenses		
Depreciation	22,319	26,094
Total Non Cash Expenses	22,319	26,094
Total Expenses	6,061,692	6,217,722
Net Profit (Loss)	16,064	(227,558)

Bette Christie - Operating

Napier Free Kindergarten Association

For the year ended 31 December 2019

	2019	2018
Income		
ECE	7,351	26,925
Parent Fees	1,030	2,335
WINZ	7,144	10,765
Total Income	15,525	40,025
Expenses		
Bank Fees	43	76
Cleaning	17,683	15,636
Educational Resource for Teaching Team		266
Electricity	2,581	2,605
Groceries and First Aid	543	390
Photocopying, Postage and Stationery	2,826	2,565
Playground Development		983
Rates	283	540
Repairs and Maintenance - Building	754	95
Repairs and Maintenance - Equipment	408	
Repairs and Maintenance - Property	3,737	6,318
Sundry Expenses	189	31
Telephone and Internet	1,525	1,438
Total Expenses	30,572	30,943
Net Profit (Loss)	(15,047)	9,082
Operating		
Opening Balance	29,427	20,345
Operating movement this year	(15,047)	9,082
Closing Balance	14,380	29,427

Bette Christie - Equity

Napier Free Kindergarten Association

For the year ended 31 December 2019

	2019	2018
Income		
MOE Equity - Low Socio Economic	35,007	31,333
MOE Equity - Special Needs	16,607	15,182
Total Income	51,614	46,515
Expenses		
Additional Teacher / Teacher Aide	22,653	23,709
Children's Consumable Play and Pets	2,093	1,614
Children's Excursions and Entertainment	7,596	4,957
Children's New and Replacement Equipment	6,742	13,475
Children's Nourishment	2,131	2,512
Children's Repairs & Maintenance Equipment	318	88
Pou Whakarewa Matauranga - Equity to NKA	10,315	9,303
Total Expenses	51,848	55,658
Net Profit (Loss)	(234)	(9,143)
Equity		
Opening Balance	32,284	41,427
Equity movement this year	(234)	(9,143)
Closing Balance	32,050	32,284

Bette Christie - Fundraising

Napier Free Kindergarten Association

For the year ended 31 December 2019

	2019	2018
Income		
Donations and Grants		500
Fundraising - No GST		255
Interest Received	861	1,618
Sundry Income	445	
Total Income	1,306	2,373
Expenses		
Playground Development	696	
Total Expenses	696	0
Net Profit (Loss)	610	2,373
Fundraising		
Opening Balance	9,755	7,382
Fundraising movement this year	610	2,373
Closing Balance	10,365	9,755

Bette Christie - Targeted Funding

Napier Free Kindergarten Association

For the year ended 31 December 2019

	2019	2018
Income		
ECE Targeted Funding	7,548	11,858
Total Income	7,548	11,858
Expenses		
Children's Basic Needs	211	1,550
Children's Consumable Play and Pets		232
Children's Excursions and Entertainment	640	3,522
Children's New and Replacement Equipment	380	1,453
Children's Nourishment	151	
Head Teacher Release	6,179	4,098
Total Expenses	7,561	10,855
Net Profit (Loss)	(13)	1,003
Targeted Funding		
Opening Balance	1,003	0
Targeted funding movement this year	(13)	1,003
Closing Balance	990	1,003

Carlyle - Operating

Napier Free Kindergarten Association
For the year ended 31 December 2019

	2019	2018
Income		
ECE	23,654	32,754
Parent Fees	15,846	8,374
WINZ	3,175	1,592
Total Income	42,675	42,720
Expenses		
Bank Fees	42	106
Children's Consumable Play and Pets	2,459	2,353
Children's Excursions and Entertainment	553	509
Children's New and Replacement Equipment	4,635	4,497
Children's Nourishment	59	112
Children's Repairs & Maintenance Equipment	699	318
Cleaning	16,365	16,141
Educational Resource for Teaching Team	274	58
Electricity	3,120	3,128
Groceries and First Aid	817	873
Photocopying, Postage and Stationery	3,053	3,716
Playground Development	2,579	2,949
Rates	1,226	1,412
Repairs and Maintenance - Building	407	1,491
Repairs and Maintenance - Property	3,872	4,920
Sundry Expenses	67	466
Telephone and Internet	1,355	1,379
Total Expenses	41,582	44,428
Net Profit (Loss)	1,093	(1,708)
Operating		
Opening Balance	5,182	6,890
Operating movement this year	1,093	(1,708)
Closing Balance	6,275	5,182

Carlyle - Fundraising

Napier Free Kindergarten Association
For the year ended 31 December 2019

	2019	2018
Income		
Donations and Grants	150	2,683
Fixed Asset Sale		46
Fundraising - GST	1,919	2,036
Fundraising - No GST	886	589
Interest Received	290	512
Sundry Income	457	330
Total Income	3,702	6,196
Expenses		
Children's New and Replacement Equipment	1,265	2,741
Playground Development		1,252
Sundry Expenses		3,623
Total Expenses	1,265	7,616
Net Profit (Loss)	2,437	(1,420)
Fundraising		
Opening Balance	13,789	15,209
Fundraising movement this year	2,437	(1,420)
Closing Balance	16,226	13,789

Eskview - Operating

Napier Free Kindergarten Association
For the year ended 31 December 2019

	2019	2018
Income		
ECE	25,770	29,767
Parent Fees	6,605	7,190
WINZ		417
Total Income	32,375	37,374
Expenses		
Bank Fees	34	35
Children's Consumable Play and Pets	2,906	3,233
Children's Excursions and Entertainment	2,010	1,554
Children's New and Replacement Equipment	4,950	1,229
Children's Repairs & Maintenance Equipment	303	663
Cleaning	15,341	13,862
Electricity	2,087	2,199
Groceries and First Aid	965	550
Photocopying, Postage and Stationery	2,632	2,821
Playground Development	1,051	
Rates	487	544
Repairs and Maintenance - Building	152	
Repairs and Maintenance - Equipment	363	
Repairs and Maintenance - Property	8,318	4,615
Sundry Expenses	218	358
Telephone and Internet	2,274	1,178
Total Expenses	44,091	32,841
Net Profit (Loss)	(11,716)	4,533
Operating		
Opening Balance	10,248	5,715
Operating movement this year	(11,716)	4,533
Closing Balance	(1,468)	10,248

Eskview - Fundraising

Napier Free Kindergarten Association

For the year ended 31 December 2019

	2019	2018
Income		
Donations and Grants	200	85
Fixed Asset Sale		23
Fundraising - GST	994	5,873
Fundraising - No GST	3,840	389
Interest Received	290	410
Sundry Income	445	
Total Income	5,769	6,780
Expenses		
Children's New and Replacement Equipment	487	3,911
Internal Alterations	200	
Playground Development	3,002	
Total Expenses	3,689	3,911
Net Profit (Loss)	2,080	2,869
Fundraising		
Opening Balance	11,452	8,583
Fundraising movement this year	2,080	2,869
Closing Balance	13,532	11,452

Greenmeadows - Operating

Napier Free Kindergarten Association

For the year ended 31 December 2019

	2019	2018
Income		
ECE	33,242	35,609
Parent Fees	6,783	4,416
Total Income	40,025	40,025
Expenses		
Bank Fees	51	61
Children's Consumable Play and Pets	3,498	3,958
Children's Excursions and Entertainment	464	2,591
Children's New and Replacement Equipment	6,558	6,814
Children's Repairs & Maintenance Equipment	74	212
Cleaning	14,640	13,884
Educational Resource for Teaching Team	89	22
Electricity	2,801	2,007
Groceries and First Aid	898	1,126
Photocopying, Postage and Stationery	2,398	3,543
Rates	1,901	
Repairs and Maintenance - Building	653	1,526
Repairs and Maintenance - Equipment	442	35
Repairs and Maintenance - Property	2,439	5,328
Sundry Expenses	186	502
Telephone and Internet	1,553	1,490
Total Expenses	38,645	43,099
Net Profit (Loss)	1,380	(3,074)
Operating		
Opening Balance	5,694	8,768
Operating movement this year	1,380	(3,074)
Closing Balance	7,074	5,694

Greenmeadows - Fundraising

Napier Free Kindergarten Association

For the year ended 31 December 2019

	2019	2018
Income		
Donations and Grants	500	600
Fixed Asset Sale		43
Fundraising - GST	3,093	2,097
Fundraising - No GST	1,511	1,940
Interest Received	264	396
Sundry Income	444	
Total Income	5,812	5,076
Expenses		
Children's New and Replacement Equipment		2,910
Internal Alterations	1,270	
Playground Development	869	1,600
Total Expenses	2,139	4,510
Net Profit (Loss)	3,673	566
Fundraising		
Opening Balance	9,872	9,306
Fundraising movement this year	3,673	566
Closing Balance	13,545	9,872

Marewa - Operating

Napier Free Kindergarten Association
For the year ended 31 December 2019

	2019	2018
Income		
ECE	31,105	34,108
Parent Fees	4,212	5,839
WINZ	208	78
Total Income	35,525	40,025
Expenses		
Bank Fees	58	89
Children's Consumable Play and Pets	3,415	3,840
Children's Excursions and Entertainment	2,217	2,755
Children's New and Replacement Equipment	3,433	6,039
Children's Nourishment	88	
Children's Repairs & Maintenance Equipment	261	293
Cleaning	18,384	16,239
Educational Resource for Teaching Team	175	
Electricity	2,916	3,193
Groceries and First Aid	1,085	1,205
Photocopying, Postage and Stationery	3,169	4,094
Rates	2,446	543
Repairs and Maintenance - Building	514	
Repairs and Maintenance - Equipment		802
Repairs and Maintenance - Property	5,446	5,100
Sundry Expenses	420	193
Telephone and Internet	1,625	1,482
Total Expenses	45,652	45,867
Net Profit (Loss)	(10,127)	(5,842)
Operating		
Opening Balance	9,898	15,740
Operating movement this year	(10,127)	(5,842)
Closing Balance	(229)	9,898

Marewa - Equity

Napier Free Kindergarten Association
For the year ended 31 December 2019

	2019	2018
Income		
MOE Equity - Low Socio Economic	8,553	8,065
MOE Equity - Special Needs	7,559	7,296
Total Income	16,112	15,361
Expenses		
Additional Teacher / Teacher Aide	8,760	8,584
Children's New and Replacement Equipment	1,176	
Children's Nourishment	759	799
Pou Whakarewa Matauranga - Equity to NKA	3,250	3,072
Total Expenses	13,945	12,455
Net Profit (Loss)	2,167	2,906
Equity		
Opening Balance	5,944	3,038
Equity movement this year	2,167	2,906
Closing Balance	8,111	5,944

Marewa - Fundraising

Napier Free Kindergarten Association

For the year ended 31 December 2019

	2019	2018
Income		
Donations and Grants		760
Fundraising - GST	314	2,661
Fundraising - No GST	2,891	331
Interest Received	311	513
Sundry Income	595	
Total Income	4,111	4,265
Expenses		
Children's New and Replacement Equipment		854
Playground Development	1,663	
Total Expenses	1,663	854
Net Profit (Loss)	2,448	3,411
Fundraising		
Opening Balance	8,149	4,738
Fundraising movement this year	2,448	3,411
Closing Balance	10,597	8,149

Marewa - Targeted Funding

Napier Free Kindergarten Association

For the year ended 31 December 2019

	2019	2018
Income		
ECE Targeted Funding	3,953	
Total Income	3,953	0
Expenses		
Children's Basic Needs	19	
Children's New and Replacement Equipment	2,949	
Individual Professional Development	73	
Total Expenses	3,041	0
Net Profit (Loss)	912	0
Targeted Funding		
Opening Balance	0	0
Targeted funding movement this year	912	0
Closing Balance	912	0

Mary Richmond - Operating

Napier Free Kindergarten Association

For the year ended 31 December 2019

	2019	2018
Income		
ECE	21,298	25,388
Parent Fees	1,359	2,617
WINZ	5,318	9,369
Total Income	27,975	37,374
Expenses		
Bank Fees	30	33
Cleaning	14,976	14,212
Educational Resource for Teaching Team	97	193
Electricity	2,431	2,510
Groceries and First Aid	681	1,075
Photocopying, Postage and Stationery	2,557	3,171
Playground Development		5,502
Rates	281	536
Repairs and Maintenance - Building	1,969	918
Repairs and Maintenance - Equipment		331
Repairs and Maintenance - Property	6,267	3,375
Sundry Expenses	145	568
Telephone and Internet	1,464	1,397
Total Expenses	30,898	33,821
Net Profit (Loss)	(2,923)	3,553
Operating		
Opening Balance	11,759	8,206
Operating movement this year	(2,923)	3,553
Closing Balance	8,836	11,759

Mary Richmond - Equity

Napier Free Kindergarten Association

For the year ended 31 December 2019

	2019	2018
Income		
MOE Equity - Low Socio Economic	29,003	29,264
MOE Equity - Special Needs	13,764	14,180
Total Income	42,767	43,444
Expenses		
Additional Teacher / Teacher Aide	9,762	14,440
Children's Consumable Play and Pets	2,436	2,977
Children's Excursions and Entertainment	2,363	1,537
Children's New and Replacement Equipment	11,178	22,736
Children's Nourishment	548	1,390
Children's Repairs & Maintenance Equipment	82	204
Head Teacher Release	183	
Pou Whakarewa Matauranga - Equity to NKA	8,586	8,689
Total Expenses	35,138	51,973
Net Profit (Loss)	7,629	(8,529)
Equity		
Opening Balance	57,558	66,087
Equity movement this year	7,629	(8,529)
Closing Balance	65,187	57,558

Mary Richmond - Fundraising

Napier Free Kindergarten Association

For the year ended 31 December 2019

	2019	2018
Income		
Donations and Grants		1,435
Fundraising - No GST	1,130	864
Interest Received	1,085	1,920
Sundry Income	445	
Total Income	2,660	4,219
Expenses		
Children's New and Replacement Equipment	553	59
Playground Development		1,500
Total Expenses	553	1,559
Net Profit (Loss)	2,107	2,660
Fundraising		
Opening Balance	13,169	10,509
Fundraising movement this year	2,107	2,660
Closing Balance	15,276	13,169

Mary Richmond - Targeted Funding

Napier Free Kindergarten Association

For the year ended 31 December 2019

	2019	2018
Income		
ECE Targeted Funding	7,267	7,248
Total Income	7,267	7,248
Expenses		
Children's Basic Needs	802	1,407
Children's Excursions and Entertainment	222	447
Children's New and Replacement Equipment	3,130	
Head Teacher Release	5,696	4,597
Total Expenses	9,850	6,451
Net Profit (Loss)	(2,583)	797
Targeted Funding		
Opening Balance	797	0
Targeted funding movement this year	(2,583)	797
Closing Balance	(1,786)	797

Nga Tamariki o Nga Hau E Wha - Operating

Napier Free Kindergarten Association

For the year ended 31 December 2019

	2019	2018
Income		
ECE	19,385	16,206
Parent Fees	3,674	4,748
WINZ	1,816	3,934
Total Income	24,875	24,888
Expenses		
Bank Fees	54	83
Cleaning	11,410	11,522
Educational Resource for Teaching Team	112	105
Electricity	3,093	3,112
Groceries and First Aid	975	1,263
Photocopying, Postage and Stationery	2,828	2,800
Rates	481	465
Repairs and Maintenance - Building	30	
Repairs and Maintenance - Equipment	720	117
Repairs and Maintenance - Property	5,268	2,939
Sundry Expenses	525	586
Telephone and Internet	1,430	1,374
Total Expenses	26,926	24,366
Net Profit (Loss)	(2,051)	522
Operating		
Opening Balance	807	285
Operating movement this year	(2,051)	522
Closing Balance	(1,244)	807

Nga Tamariki o Nga Hau E Wha - Equity

Napier Free Kindergarten Association

For the year ended 31 December 2019

	2019	2018
Income		
MOE Equity - Isolation	3,031	3,031
MOE Equity - Low Socio Economic	11,068	12,733
MOE Equity - Special Needs	5,392	6,366
Total Income	19,491	22,130
Expenses		
Additional Teacher / Teacher Aide	4,861	
Children's Consumable Play and Pets	2,088	1,908
Children's Excursions and Entertainment	1,390	396
Children's New and Replacement Equipment	7,482	4,524
Children's Nourishment	2,852	3,386
Children's Repairs & Maintenance Equipment		542
Pou Whakarewa Matauranga - Equity to NKA	3,843	4,426
Total Expenses	22,516	15,182
Net Profit (Loss)	(3,025)	6,948
Equity		
Opening Balance	7,876	928
Equity movement this year	(3,025)	6,948
Closing Balance	4,851	7,876

Nga Tamariki o Nga Hau E Wha - Fundraising

Napier Free Kindergarten Association

For the year ended 31 December 2019

	2019	2018
Income		
Donations and Grants		20
Fundraising - GST	332	
Fundraising - No GST	3,186	1,021
Interest Received	153	159
Sundry Income	8	
Total Income	3,679	1,200
Expenses		
Children's Excursions and Entertainment	170	
Children's New and Replacement Equipment	913	
Playground Development	112	1,508
Total Expenses	1,195	1,508
Net Profit (Loss)	2,484	(308)
Fundraising		
Opening Balance	2,483	2,791
Fundraising movement this year	2,484	(308)
Closing Balance	4,967	2,483

Nga Tamariki o Nga Hau E Wha - Targeted Funding

Napier Free Kindergarten Association
For the year ended 31 December 2019

	2019	2018
Income		
ECE Targeted Funding	4,397	6,346
Total Income	4,397	6,346
Expenses		
Children's Basic Needs	99	409
Children's Consumable Play and Pets		9
Children's Excursions and Entertainment	130	1,887
Children's New and Replacement Equipment	990	2,592
Community Engagement	725	
Head Teacher Release	1,385	
Individual Professional Development	209	261
Playground Development		654
Total Expenses	3,538	5,812
Net Profit (Loss)	859	534
Targeted Funding		
Opening Balance	534	0
Targeted funding movement this year	859	534
Closing Balance	1,393	534

Onekawa - Operating

Napier Free Kindergarten Association
For the year ended 31 December 2019

	2019	2018
Income		
ECE	31,202	32,649
Parent Fees	5,038	2,637
WINZ	1,135	2,088
Total Income	37,375	37,374
Expenses		
Bank Fees	33	59
Children's New and Replacement Equipment		2,146
Cleaning	16,051	14,535
Educational Resource for Teaching Team	388	90
Electricity	2,236	2,667
Groceries and First Aid	727	781
Photocopying, Postage and Stationery	3,002	3,352
Playground Development	243	
Rates	1,928	
Repairs and Maintenance - Building	10,081	
Repairs and Maintenance - Equipment	680	
Repairs and Maintenance - Property	6,073	13,649
Sundry Expenses	320	119
Telephone and Internet	1,335	1,233
Total Expenses	43,097	38,631
Net Profit (Loss)	(5,722)	(1,257)
Operating		
Opening Balance	5,711	6,968
Operating movement this year	(5,722)	(1,257)
Closing Balance	(11)	5,711

Onekawa - Equity

Napier Free Kindergarten Association
For the year ended 31 December 2019

	2019	2018
Income		
MOE Equity - Low Socio Economic	7,808	7,552
MOE Equity - Special Needs	6,898	6,832
Total Income	14,706	14,384
Expenses		
Additional Teacher / Teacher Aide		1,713
Children's Consumable Play and Pets	2,429	1,008
Children's Excursions and Entertainment	216	810
Children's New and Replacement Equipment	7,494	1,277
Children's Nourishment	638	226
Children's Repairs & Maintenance Equipment	166	31
Pou Whakarewa Matauranga - Equity to NKA	2,915	2,877
Total Expenses	13,858	7,942
Net Profit (Loss)	848	6,442
Equity		
Opening Balance	19,600	13,158
Equity movement this year	848	6,442
Closing Balance	20,448	19,600

Onekawa - Fundraising

Napier Free Kindergarten Association

For the year ended 31 December 2019

	2019	2018
Income		
Donations and Grants		500
Fundraising - GST	764	(81)
Fundraising - No GST	1,866	3,757
Interest Received	444	598
Sundry Income	1,525	
Total Income	4,599	4,774
Expenses		
Children's Consumable Play and Pets	25	
Children's New and Replacement Equipment	2	137
Playground Development	900	
Repairs and Maintenance - Property	1,628	
Total Expenses	2,555	137
Net Profit (Loss)	2,044	4,637
Fundraising		
Opening Balance	8,970	4,333
Fundraising movement this year	2,044	4,637
Closing Balance	11,014	8,970

Onekawa - Targeted Funding

Napier Free Kindergarten Association

For the year ended 31 December 2019

	2019	2018
Income		
ECE Targeted Funding	3,182	4,952
Total Income	3,182	4,952
Expenses		
Children's Basic Needs	43	35
Children's Excursions and Entertainment	448	250
Children's New and Replacement Equipment	1,300	1,686
Children's Nourishment	148	425
Community Engagement	582	
Head Teacher Release	1,009	1,830
Playground Development	85	
Total Expenses	3,615	4,226
Net Profit (Loss)	(433)	726
Targeted Funding		
Opening Balance	726	0
Targeted funding movement this year	(433)	726
Closing Balance	293	726

Pirimai - Operating

Napier Free Kindergarten Association
For the year ended 31 December 2019

	2019	2018
Income		
ECE	14,908	31,699
Parent Fees	10,352	4,813
WINZ	2,115	862
Total Income	27,375	37,374
Expenses		
Bank Fees	34	38
Cleaning	13,566	14,115
Educational Resource for Teaching Team	96	
Electricity	3,211	3,145
Groceries and First Aid	1,001	1,112
Photocopying, Postage and Stationery	2,705	3,257
Playground Development	13,652	
Rates	1,676	
Repairs and Maintenance - Building	181	237
Repairs and Maintenance - Equipment	202	
Repairs and Maintenance - Property	4,511	3,986
Sundry Expenses	536	367
Telephone and Internet	1,632	1,556
Total Expenses	43,003	27,813
Net Profit (Loss)	(15,628)	9,561
Operating		
Opening Balance	16,820	7,259
Operating movement this year	(15,628)	9,561
Closing Balance	1,192	16,820

Pirimai - Equity

Napier Free Kindergarten Association
For the year ended 31 December 2019

	2019	2018
Income		
MOE Equity - Low Socio Economic	7,275	7,608
MOE Equity - Special Needs	6,432	6,883
Total Income	13,707	14,491
Expenses		
Additional Teacher / Teacher Aide	7,234	
Children's Consumable Play and Pets	2,700	2,644
Children's Excursions and Entertainment	1,945	1,776
Children's New and Replacement Equipment	4,512	5,085
Children's Nourishment	1,433	1,370
Children's Repairs & Maintenance Equipment		620
Pou Whakarewa Matauranga - Equity to NKA	2,812	2,898
Total Expenses	20,636	14,393
Net Profit (Loss)	(6,929)	98
Equity		
Opening Balance	5,329	5,231
Equity movement this year	(6,929)	98
Closing Balance	(1,600)	5,329

Pirimai - Fundraising

Napier Free Kindergarten Association
For the year ended 31 December 2019

	2019	2018
Income		
Donations and Grants	250	619
Fundraising - GST	693	1,299
Fundraising - No GST	3,521	2,907
Interest Received	225	621
Sundry Income	445	
Total Income	5,134	5,446
Expenses		
Playground Development	11,656	3,320
Total Expenses	11,656	3,320
Net Profit (Loss)	(6,522)	2,126
Fundraising		
Opening Balance	12,218	10,092
Fundraising movement this year	(6,522)	2,126
Closing Balance	5,696	12,218

Pirimai - Targeted Funding

Napier Free Kindergarten Association

For the year ended 31 December 2019

	2019	2018
Income		
ECE Targeted Funding	0	5,155
Total Income	0	5,155
Expenses		
Children's Basic Needs		120
Children's Excursions and Entertainment		780
Children's New and Replacement Equipment		663
Head Teacher Release	310	3,282
Total Expenses	310	4,845
Net Profit (Loss)	(310)	310
Targeted Funding		
Opening Balance	310	0
Targeted funding movement this year	(310)	310
Closing Balance	0	310

Riversdale - Operating

Napier Free Kindergarten Association

For the year ended 31 December 2019

	2019	2018
Income		
ECE	29,840	30,365
Parent Fees	6,515	4,474
WINZ	1,020	2,548
Total Income	37,375	37,387
Expenses		
Bank Fees	43	69
Children's Consumable Play and Pets	1,636	2,758
Children's Excursions and Entertainment	1,316	2,522
Children's New and Replacement Equipment	6,498	3,680
Children's Nourishment	48	91
Children's Repairs & Maintenance Equipment	323	
Cleaning	12,892	11,859
Educational Resource for Teaching Team	215	326
Electricity	2,104	2,289
Groceries and First Aid	1,197	1,788
Photocopying, Postage and Stationery	3,012	2,830
Playground Development	16,700	
Rates	493	551
Repairs and Maintenance - Building		
Repairs and Maintenance - Equipment	616	
Repairs and Maintenance - Property	4,144	4,237
Sundry Expenses	700	740
Telephone and Internet	1,456	1,390
Total Expenses	53,393	35,130
Net Profit (Loss)	(16,018)	2,257
Operating		
Opening Balance	16,536	14,279
Operating movement this year	(16,018)	2,257
Closing Balance	518	16,536

Riversdale - Fundraising

Napier Free Kindergarten Association
For the year ended 31 December 2019

	2019	2018
Income		
Donations and Grants		500
Fixed Asset Sale		87
Fundraising - GST	867	1,143
Fundraising - No GST	2,208	2,630
Interest Received	176	542
Sundry Income	457	
Total Income	3,708	4,902
Expenses		
Playground Development	9,932	
Repairs and Maintenance - Property		7,980
Total Expenses	9,932	7,980
Net Profit (Loss)	(6,224)	(3,078)
Fundraising		
Opening Balance	10,834	13,912
Fundraising movement this year	(6,224)	(3,078)
Closing Balance	4,610	10,834

Tamatea - Operating

Napier Free Kindergarten Association

For the year ended 31 December 2019

	2019	2018
Income		
ECE	31,144	32,847
Parent Fees	5,246	2,930
WINZ	985	1,607
Total Income	37,375	37,384
Expenses		
Bank Fees	53	33
Children's Consumable Play and Pets	1,398	1,822
Children's Excursions and Entertainment	1,206	1,274
Children's New and Replacement Equipment	3,536	6,493
Children's Nourishment	441	1,138
Children's Repairs & Maintenance Equipment	51	419
Cleaning	14,244	13,319
Educational Resource for Teaching Team		107
Electricity	2,191	2,231
Groceries and First Aid	743	692
Photocopying, Postage and Stationery	2,845	2,242
Playground Development	1,739	
Rates	966	
Repairs and Maintenance - Building	104	90
Repairs and Maintenance - Equipment	190	834
Repairs and Maintenance - Property	5,493	3,160
Sundry Expenses	227	314
Telephone and Internet	1,563	1,441
Total Expenses	36,990	35,609
Net Profit (Loss)	385	1,775
Operating		
Opening Balance	4,167	2,392
Operating movement this year	385	1,775
Closing Balance	4,552	4,167

Tamatea - Fundraising

Napier Free Kindergarten Association

For the year ended 31 December 2019

	2019	2018
Income		
Donations and Grants		500
Fundraising - GST	479	
Fundraising - No GST		911
Interest Received	136	205
Sundry Income	465	
Total Income	1,080	1,616
Expenses		
Children's New and Replacement Equipment		835
Playground Development	2,361	
Repairs and Maintenance - Property		765
Total Expenses	2,361	1,600
Net Profit (Loss)	(1,281)	16
Fundraising		
Opening Balance	4,351	4,335
Fundraising movement this year	(1,281)	16
Closing Balance	3,070	4,351

Tamatea - Targeted Funding

Napier Free Kindergarten Association

For the year ended 31 December 2019

	2019	2018
Income		
ECE Targeted Funding	0	4,733
Total Income	0	4,733
Expenses		
Head Teacher Release	670	4,063
Total Expenses	670	4,063
Net Profit (Loss)	(670)	670
Targeted Funding		
Opening Balance	670	0
Targeted funding movement this year	(670)	670
Closing Balance	0	670

Taradale - Operating

Napier Free Kindergarten Association
For the year ended 31 December 2019

	2019	2018
Income		
ECE	27,914	30,546
Parent Fees	12,111	9,479
WINZ		
Total Income	40,025	40,025
Expenses		
Bank Fees	68	69
Children's Consumable Play and Pets	2,693	2,963
Children's Excursions and Entertainment	4,378	4,554
Children's New and Replacement Equipment	3,159	4,958
Children's Repairs & Maintenance Equipment	354	35
Cleaning	15,724	14,252
Educational Resource for Teaching Team	69	80
Electricity	1,852	1,934
Groceries and First Aid	421	610
Photocopying, Postage and Stationery	2,676	2,444
Rates	1,850	
Repairs and Maintenance - Building	478	153
Repairs and Maintenance - Equipment	86	304
Repairs and Maintenance - Property	4,091	4,870
Sundry Expenses	437	449
Telephone and Internet	1,683	1,482
Total Expenses	40,019	39,157
Net Profit (Loss)	6	868
Operating		
Opening Balance	4,008	3,140
Operating movement this year	6	868
Closing Balance	4,014	4,008

Taradale - Fundraising

Napier Free Kindergarten Association

For the year ended 31 December 2019

	2019	2018
Income		
Donations and Grants		500
Fundraising - GST	1,770	1,414
Fundraising - No GST	4,766	5,505
Interest Received	125	205
Sundry Income	445	
Total Income	7,106	7,624
Expenses		
Children's Excursions and Entertainment	256	
Children's New and Replacement Equipment	3,206	7,030
Children's Repairs & Maintenance Equipment		1,159
Playground Development	1,386	
Repairs and Maintenance - Property	1,030	
Total Expenses	5,878	8,189
Net Profit (Loss)	1,228	(565)
Fundraising		
Opening Balance	3,070	3,635
Fundraising movement this year	1,228	(565)
Closing Balance	4,298	3,070

Te Awanga - Operating

Napier Free Kindergarten Association

For the year ended 31 December 2019

	2019	2018
Income		
ECE	26,689	28,269
Parent Fees	3,347	5,465
WINZ	1,189	991
Total Income	31,225	34,725
Expenses		
Bank Fees	30	36
Children's Consumable Play and Pets	1,369	1,695
Children's Excursions and Entertainment	749	693
Children's New and Replacement Equipment	3,035	2,730
Children's Nourishment	16	223
Children's Repairs & Maintenance Equipment		137
Cleaning	13,253	14,428
Educational Resource for Teaching Team	92	80
Electricity	2,620	2,947
Groceries and First Aid	950	1,058
Photocopying, Postage and Stationery	2,111	2,748
Repairs and Maintenance - Building		9
Repairs and Maintenance - Equipment	231	73
Repairs and Maintenance - Property	3,515	3,658
Sundry Expenses	164	168
Telephone and Internet	1,406	1,288
Total Expenses	29,541	31,971
Net Profit (Loss)	1,684	2,754
Operating		
Opening Balance	8,796	6,042
Operating movement this year	1,684	2,754
Closing Balance	10,480	8,796

Te Awanga - Fundraising

Napier Free Kindergarten Association

For the year ended 31 December 2019

	2019	2018
Income		
Donations and Grants	15,570	5,245
Fundraising - GST	126	(32)
Fundraising - No GST	761	2,909
Interest Received	202	211
Sundry Income	445	
Total Income	17,104	8,333
Expenses		
Playground Development	8,352	7,903
Total Expenses	8,352	7,903
Net Profit (Loss)	8,752	430
Fundraising		
Opening Balance	1,733	1,303
Fundraising movement this year	8,752	430
Closing Balance	10,485	1,733

Te Awanga - Targeted Funding

Napier Free Kindergarten Association

For the year ended 31 December 2019

	2019	2018
Income		
ECE Targeted Funding	1,733	0
Total Income	1,733	0
Expenses		
Children's New and Replacement Equipment	1,499	
Total Expenses	1,499	0
Net Profit (Loss)	234	0
Targeted Funding		
Opening Balance	0	0
Targeted funding movement this year	234	0
Closing Balance	234	0

Wairoa - Operating

Napier Free Kindergarten Association
For the year ended 31 December 2019

	2019	2018
Income		
ECE	15,739	27,056
Parent Fees	2,741	1,148
WINZ	7,195	4,492
Total Income	25,675	32,696
Expenses		
Bank Fees	69	110
Cleaning	11,209	11,333
Educational Resource for Teaching Team	52	472
Electricity	2,475	2,534
Groceries and First Aid	815	711
Internal Alterations		3,473
Photocopying, Postage and Stationery	3,409	3,147
Playground Development	10	
Rates	1,651	1,665
Repairs and Maintenance - Building	224	2,117
Repairs and Maintenance - Equipment	575	8,852
Repairs and Maintenance - Property	5,117	8,121
Sundry Expenses	352	552
Telephone and Internet	1,461	1,500
Total Expenses	27,419	44,587
Net Profit (Loss)	(1,744)	(11,891)
Operating		
Opening Balance	11,938	23,829
Operating movement this year	(1,744)	(11,891)
Closing Balance	10,194	11,938

Wairoa - Equity

Napier Free Kindergarten Association
For the year ended 31 December 2019

	2019	2018
Income		
MOE Equity - Isolation	3,031	3,032
MOE Equity - Low Socio Economic	24,372	28,059
MOE Equity - Special Needs	9,382	10,932
Total Income	36,785	42,023
Expenses		
Additional Teacher / Teacher Aide	23,186	3,930
Children's Consumable Play and Pets	2,180	2,252
Children's Excursions and Entertainment	762	532
Children's New and Replacement Equipment	7,377	8,608
Children's Nourishment	3,359	1,765
Children's Repairs & Maintenance Equipment	78	1,915
Individual Professional Development	1,394	391
Playground Development	4,458	412
Pou Whakarewa Matauranga - Equity to NKA	7,692	8,405
Total Expenses	50,486	28,210
Net Profit (Loss)	(13,701)	13,813
Equity		
Opening Balance	85,161	71,348
Equity movement this year	(13,701)	13,813
Closing Balance	71,460	85,161

Wairoa - Fundraising

Napier Free Kindergarten Association

For the year ended 31 December 2019

	2019	2018
Income		
Fixed Assets Sale		797
Fundraising - GST		130
Fundraising - No GST		255
Interest Received	1,673	2,784
Sundry Income	272	
Total Income	1,945	3,966
Expenses		
Playground Development	7,318	
Repairs and Maintenance - Property	4,920	
Total Expenses	12,238	0
Net Profit (Loss)	(10,293)	3,966
Fundraising		
Opening Balance	30,750	26,784
Fundraising movement this year	(10,293)	3,966
Closing Balance	20,457	30,750

Wairoa - Targeted Funding

Napier Free Kindergarten Association

For the year ended 31 December 2019

	2019	2018
Income		
ECE Targeted Funding	5,793	6,129
Total Income	5,793	6,129
Expenses		
Children's Basic Needs	531	972
Children's Excursions and Entertainment	902	1,363
Children's New and Replacement Equipment	3,672	2,758
Children's Nourishment		236
Community Engagement	1,781	
Head Teacher Release	853	
Individual Professional Development	104	
Total Expenses	7,843	5,329
Net Profit (Loss)	(2,050)	800
Targeted Funding		
Opening Balance	800	0
Targeted funding movement this year	(2,050)	800
Closing Balance	(1,250)	800

Wharerangi - Operating

Napier Free Kindergarten Association

For the year ended 31 December 2019

	2019	2018
Income		
ECE	31,183	32,398
Parent Fees	4,243	3,932
WINZ	1,949	1,044
Total Income	37,375	37,374
Expenses		
Bank Fees	30	40
Children's Consumable Play and Pets	2,141	2,147
Children's Excursions and Entertainment	403	653
Children's New and Replacement Equipment	2,986	6,047
Children's Nourishment	167	70
Children's Repairs & Maintenance Equipment	866	762
Cleaning	14,552	13,586
Educational Resource for Teaching Team	158	93
Electricity	2,074	2,477
Groceries and First Aid	1,085	1,039
Photocopying, Postage and Stationery	2,903	2,414
Rates	491	549
Repairs and Maintenance - Building	230	403
Repairs and Maintenance - Equipment	107	
Repairs and Maintenance - Property	5,486	6,597
Sundry Expenses	233	342
Telephone and Internet	1,629	1,544
Total Expenses	35,541	38,763
Net Profit (Loss)	1,834	(1,389)
Operating		
Opening Balance	(935)	454
Operating movement this year	1,834	(1,389)
Closing Balance	899	(935)

Wharerangi - Fundraising

Napier Free Kindergarten Association

For the year ended 31 December 2019

	2019	2018
Income		
Donations and Grants		1,800
Fundraising - GST	131	
Fundraising - No GST		255
Interest Received	48	113
Sundry Income	445	
Total Income	624	2,168
Expenses		
Children's New and Replacement Equipment	3,088	2,267
Children's Repairs & Maintenance Equipment	66	
Total Expenses	3,154	2,267
Net Profit (Loss)	(2,530)	(99)
Fundraising		
Opening Balance	5,072	5,171
Fundraising movement this year	(2,530)	(99)
Closing Balance	2,542	5,072

Wycliffe Nga Tamariki - Operating

Napier Free Kindergarten Association

For the year ended 31 December 2019

	2019	2018
Income		
ECE	15,366	30,786
Parent Fees	352	2,285
WINZ	2,007	1,654
Total Income	17,725	34,725
Expenses		
Bank Fees	76	79
Cleaning	15,069	14,047
Educational Resource for Teaching Team	143	200
Electricity	2,526	2,397
Groceries and First Aid	1,381	1,164
Photocopying, Postage and Stationery	2,468	2,638
Rates	487	544
Repairs and Maintenance - Equipment	472	
Repairs and Maintenance - Property	5,657	3,895
Sundry Expenses	159	223
Telephone and Internet	1,292	1,217
Total Expenses	29,730	26,404
Net Profit (Loss)	(12,005)	8,321
Operating		
Opening Balance	22,461	14,140
Operating movement this year	(12,005)	8,321
Closing Balance	10,456	22,461

Wycliffe Nga Tamariki - Equity

Napier Free Kindergarten Association

For the year ended 31 December 2019

	2019	2018
Income		
MOE Equity - Low Socio Economic	25,187	25,582
MOE Equity - Special Needs	11,954	12,395
Total Income	37,141	37,977
Expenses		
Additional Teacher / Teacher Aide	18,125	11,422
Children's Consumable Play and Pets	1,377	2,324
Children's Excursions and Entertainment	2,384	1,922
Children's New and Replacement Equipment	5,010	5,474
Children's Nourishment	1,387	711
Children's Repairs & Maintenance Equipment	634	117
Pou Whakarewa Matauranga - Equity to NKA	7,384	7,595
Total Expenses	36,301	29,565
Net Profit (Loss)	840	8,412
Equity		
Opening Balance	29,024	20,612
Equity movement this year	840	8,412
Closing Balance	29,864	29,024

Wycliffe Nga Tamariki - Fundraising

Napier Free Kindergarten Association

For the year ended 31 December 2019

	2019	2018
Income		
Donations and Grants		500
Fundraising - GST		107
Fundraising - No GST		255
Interest Received	754	1,266
Sundry Income	445	(9,766)
Total Income	1,199	- 7,638
Expenses		
Children's New and Replacement Equipment		52
Internal Alterations		2,554
Total Expenses	0	2,606
Net Profit (Loss)	1,199	(10,244)
Fundraising		
Opening Balance	6,279	16,523
Fundraising movement this year	1,199	(10,244)
Closing Balance	7,478	6,279

Wycliffe Nga Tamariki - Targeted Funding

Napier Free Kindergarten Association

For the year ended 31 December 2019

	2019	2018
Income		
ECE Targeted Funding	4,853	6,027
Total Income	4,853	6,027
Expenses		
Children's Basic Needs	282	627
Children's New and Replacement Equipment	396	
Head Teacher Release	5,602	4,746
Total Expenses	6,280	5,373
Net Profit (Loss)	(1,427)	654
Targeted Funding		
Opening Balance	654	0
Targeted funding movement this year	(1,427)	654
Closing Balance	(773)	654

Depreciation Schedule

Napier Free Kindergarten Association Incorporated

For the year ended 31 December 2019

NAME	COST	OPENING VALUE	METHOD	RATE	OPENING ACCUM DEP	PURCHASES	DISPOSALS	DEPRECIATION	CLOSING VALUE	PRIVATE USE AMOUNT
Buildings - At valuation										
5 Norfolk Street Tamatea - Lot 2 DP 14244	10,000	10,000	None	-	-	-	-	-	10,000	-
55 Freyburg Road Wairoa - Nga Tamariki	469,030	421,154	DV	0.00%	47,876	-	-	-	421,154	-
66 Kennedy Road	260,883	193,951	DV	0.00%	66,932	-	-	-	193,951	-
Bette Christie Revaluation - 2016	60,628	60,628	None	-	-	-	-	-	60,628	-
Bette Christie Revaluation - 2019	92,263	-	DV	0.00%	-	92,263	-	-	92,263	-
Carlyle Revaluation - 2016	132,070	132,070	None	-	-	-	-	-	132,070	-
Carlyle Revaluation - 2019	116,249	-	DV	0.00%	-	116,249	-	-	116,249	-
Eskview Revaluation - 2016	227,000	227,000	None	-	-	-	-	-	227,000	-
Eskview Revaluation - 2019	73,460	-	DV	0.00%	-	73,460	-	-	73,460	-
Greenmeadows Revaluation - 2016	226,000	226,000	None	-	-	-	-	-	226,000	-
Greenmeadows Revaluation - 2019	75,380	-	DV	0.00%	-	75,380	-	-	75,380	-
Head Office Revaluation - 2016	9,753	9,753	DV	0.00%	-	-	-	-	9,753	-
Head Office Revaluation - 2019	75,619	-	DV	0.00%	-	75,619	-	-	75,619	-
Marewa Revaluation - 2016	214,000	214,000	None	-	-	-	-	-	214,000	-
Marewa Revaluation - 2019	134,798	-	DV	0.00%	-	134,798	-	-	134,798	-
Mary Richmond Revaluation - 2016	164,000	164,000	None	-	-	-	-	-	164,000	-
Mary Richmond Revaluation - 2019	5,193	-	DV	0.00%	-	5,193	-	-	5,193	-
Nga Tamariki Revaluation	-	-	DV	0.00%	-	-	-	-	-	-
Nga Tamariki Revaluation - 2019	100,352	-	DV	0.00%	-	100,352	-	-	100,352	-
Onekawa Revaluation - 2016	188,000	188,000	None	-	-	-	-	-	188,000	-

NAME	COST	OPENING VALUE	METHOD	RATE	OPENING ACCUM DEP	PURCHASES	DISPOSALS	DEPRECIATION	CLOSING VALUE	PRIVATE USE AMOUNT
Onekawa Revaluation - 2019	35,300	-	DV	0.00%	-	35,300	-	-	35,300	-
Pirimai Revaluation - 2016	162,000	162,000	None		-	-	-	-	162,000	-
Pirimai Revaluation - 2019	67,578	-	DV	0.00%	-	67,578	-	-	67,578	-
Riversdale Revaluation - 2016	220,000	220,000	None		-	-	-	-	220,000	-
Riversdale Revaluation - 2019	83,008	-	DV	0.00%	-	83,008	-	-	83,008	-
Tamatea Revaluation - 2016	85,039	85,039	None		-	-	-	-	85,039	-
Tamatea Revaluation - 2019	146,293	-	DV	0.00%	-	146,293	-	-	146,293	-
Taradale Revaluation - 2016	197,000	197,000	None		-	-	-	-	197,000	-
Taradale Revaluation - 2019	69,378	-	DV	0.00%	-	69,378	-	-	69,378	-
Te Awanga Revaluation - 2016	351,000	351,000	None		-	-	-	-	351,000	-
Te Awanga Revaluation - 2019	150,321	-	DV	0.00%	-	150,321	-	-	150,321	-
Wairoa Revaluation - 2016	172,000	172,000	None		-	-	-	-	172,000	-
Wairoa Revaluation - 2019	147,891	-	DV	0.00%	-	147,891	-	-	147,891	-
Wharerangi Revaluation - 2016	195,000	195,000	None		-	-	-	-	195,000	-
Wharerangi Revaluation - 2019	48,278	-	DV	0.00%	-	48,278	-	-	48,278	-
Wycliffe Nga Tamariki Revaluation - 2016	167,000	167,000	None		-	-	-	-	167,000	-
Wycliffe Nga Tamariki Revaluation - 2019	43,308	-	DV	0.00%	-	43,308	-	-	43,308	-
Total Buildings - At valuation	4,975,072	3,395,595			114,808	1,464,669	-	-	4,860,264	-
COI Assets										
Computer	3,948	-	DV	48.00%	3,948	-	-	-	-	-
Handycam-Sony	1,067	1	DV	39.60%	1,066	-	-	-	1	-
Office Screens	1,212	109	DV	14.40%	1,103	-	-	16	93	-
Projector-Panasonic	1,404	1	DV	39.60%	1,403	-	-	1	1	-
Total COI Assets	7,631	112			7,519	-	-	17	95	-
Freehold Land - At cost										
62 Kennedy Road	36,096	36,096	None		-	-	-	-	36,096	-

Depreciation Schedule

NAME	COST	OPENING VALUE	METHOD	RATE	OPENING ACCUM DEP	PURCHASES	DISPOSALS	DEPRECIATION	CLOSING VALUE	PRIVATE USE AMOUNT
66 Kennedy Road	48,904	48,904	None	-	-	-	-	-	48,904	-
Head Office Revaluation	15,000	15,000	None	-	-	-	-	-	15,000	-
Nga Tamariki Revaluation	15,000	15,000	None	-	-	-	-	-	15,000	-
Total Freehold Land - At cost	115,000	115,000							115,000	
Leasehold Land										
Bette Christie Revaluation	6,000	6,000	None	-	-	-	-	-	6,000	-
Carlyle Revaluation	16,000	16,000	None	-	-	-	-	-	16,000	-
Eskview Revaluation	20,000	20,000	None	-	-	-	-	-	20,000	-
Greenmeadows Revaluation	19,000	19,000	None	-	-	-	-	-	19,000	-
Marewa Revaluation	24,000	24,000	None	-	-	-	-	-	24,000	-
Mary Richmond Revaluation	14,000	14,000	None	-	-	-	-	-	14,000	-
Nga Tamariki Revaluation	4,000	4,000	None	-	-	-	-	-	4,000	-
Onekawa Revaluation	16,000	16,000	None	-	-	-	-	-	16,000	-
Pirimai Revaluation	12,000	12,000	None	-	-	-	-	-	12,000	-
Riversdale Revaluation	21,000	21,000	None	-	-	-	-	-	21,000	-
Tamatea Revaluation	15,000	15,000	None	-	-	-	-	-	15,000	-
Taradale Revaluation	21,000	21,000	None	-	-	-	-	-	21,000	-
Te Awanga Revaluation	23,000	23,000	None	-	-	-	-	-	23,000	-
Wharangi Revaluation	14,000	14,000	None	-	-	-	-	-	14,000	-
Wycliffe Nga Tamariki Revaluation	12,000	12,000	None	-	-	-	-	-	12,000	-
Total Leasehold Land	237,000	237,000							237,000	
Motor Vehicles										
2007 Daihatsu Sirion Hatchback (DLN182)	2,582	1,322	DV	26.00%	1,260	-	-	344	978	-
2007 Daihatsu Sirion Hatchback (EBM934)	2,719	1,392	DV	26.00%	1,327	-	-	362	1,030	-
2007 Daihatsu Sirion Hatchback (GJH635)	2,908	1,489	DV	26.00%	1,419	-	-	387	1,102	-

NAME	COST	OPENING VALUE	METHOD	RATE	OPENING ACCUM DEP	PURCHASES	DISPOSALS	DEPRECIATION	CLOSING VALUE	PRIVATE USE AMOUNT
2007 Daihatsu Sirion Hatchback (GKG472)	2,908	1,489	DV	26.00%	1,419	-	-	387	1,102	-
Total Motor Vehicles	11,117	5,692			5,425	-	-	1,480	4,212	-
Plant & Equipment										
Airconditioning Unit	1,333	20	DV	21.60%	1,313	-	-	4	16	-
Apple iPhone 4S	589	-	DV	67.00%	589	-	-	-	-	-
Binder	567	4	DV	26.40%	563	-	-	1	3	-
Blind	312	1	DV	22.00%	311	-	-	-	-	-
Blinds	344	1	DV	26.40%	343	-	-	-	-	-
Boardroom Table	2,147	561	DV	15.60%	1,586	-	-	87	473	-
Boiling Unit-Zenith 5lt-Mary Richmond	1,150	376	DV	12.00%	774	-	-	45	331	-
Camera-Fuji Finepix	267	-	DV	39.60%	267	-	-	-	-	-
Cellphones (15)	2,666	-	DV	80.40%	2,666	-	-	-	-	-
Chair with arms	266	4	DV	18.00%	262	-	-	1	3	-
Chairs (3)	388	6	DV	15.00%	382	-	-	1	5	-
Chairs (3)-Typist	360	14	DV	18.00%	346	-	-	3	12	-
Chairs Stacker (4)	196	5	DV	18.00%	191	-	-	1	4	-
Computer - SFF i3-2120M Desktop (ex.PAFT)	143	30	DV	50.00%	113	-	-	15	15	-
Computer Notebook	2,464	-	DV	48.00%	2,464	-	-	-	-	-
Computer Pentium	2,304	-	DV	48.00%	2,304	-	-	-	-	-
Computer Software (15)-Firstbase	19,500	-	DV	48.00%	19,500	-	-	-	-	-
Computer Software (2)-Nortons	299	-	DV	48.00%	299	-	-	-	-	-
Computer Software (20)-Office 2003	2,016	-	DV	48.00%	2,016	-	-	-	-	-
Computer Software-Comacc	2,835	-	DV	48.00%	2,835	-	-	-	-	-
Computer Software-M/S Office	178	-	DV	48.00%	178	-	-	-	-	-

Depreciation Schedule



NAME	COST	OPENING VALUE	METHOD	RATE	OPENING ACCUM DEP	PURCHASES	DISPOSALS	DEPRECIATION	CLOSING VALUE	PRIVATE USE AMOUNT
Computer-Compaq Notebook-Pirimai	1,332	-	DV	60.00%	1,332	-	-	-	-	-
Computer-Compaq Presario-Beth	1,066	-	DV	60.00%	1,066	-	-	-	-	-
Computer-Compaq Presario-FS	1,377	-	DV	60.00%	1,377	-	-	-	-	-
Computer-Dell Dimension Desktop	1,933	-	DV	60.00%	1,933	-	-	-	-	-
Computer-HP Pavilion Notebook & Bag (12)-various kinds	14,400	4	DV	60.00%	14,396	-	-	2	2	-
Computer-Presario Notebook	1,914	-	DV	60.00%	1,914	-	-	-	-	-
Computers Pentium (15)	33,885	3	DV	48.00%	33,882	-	-	1	2	-
Computer- Toshiba Satellite L300-Head Office	1,372	-	DV	60.00%	1,372	-	-	-	-	-
Computer- Toshiba Satellite Notebook	2,391	-	DV	60.00%	2,391	-	-	-	-	-
Computer- Toshiba Satellite Pro L300-Riversdale	1,100	-	DV	60.00%	1,100	-	-	-	-	-
Computer- Toshiba Satellite Pro L300-Te Awanga	1,074	-	DV	60.00%	1,074	-	-	-	-	-
Cordless Phones	703	-	DV	60.00%	703	-	-	-	-	-
Couch 2 Seater-Blue	715	50	DV	18.00%	665	-	-	9	41	-
Couch 2 Seater-Plum	715	-	DV	14.40%	715	-	-	-	-	-
Cradenza Novella	243	14	DV	14.40%	229	-	-	2	12	-
Cubicle Units-Wairoa	2,404	721	DV	13.00%	1,683	-	-	94	628	-
Data Projector-Epson DVD	977	1	DV	48.00%	976	-	-	-	-	-
Data Projector-Sanyo PLCXU75-Riversdale	1,495	31	DV	30.00%	1,464	-	-	9	22	-
Data Projector-Viewsonic PJ6251-Onekawa	2,200	124	DV	30.00%	2,076	-	-	37	87	-
Desk	251	10	DV	14.40%	241	-	-	1	8	-
Desk, Drawers & Hutches-Mary Richmond 1/2 share	1,338	225	DV	14.40%	1,113	-	-	32	193	-
Desks, bookcase, credenza-Carlyle	3,485	757	DV	15.60%	2,728	-	-	118	639	-

Depreciation Schedule



NAME	COST	OPENING VALUE	METHOD	RATE	OPENING ACCUM DEP	PURCHASES	DISPOSALS	DEPRECIATION	CLOSING VALUE	PRIVATE USE AMOUNT
Desktop PC (FM)	1,069	13	DV	50.00%	1,056	-	-	6	6	-
Dishwasher, basin etc-Onekawa	1,250	35	DV	36.00%	1,215	-	-	13	23	-
Dishwasher-Fisher & Paykel	1,000	6	DV	31.20%	994	-	-	2	4	-
Drawers-Set of 4-Novella	203	20	DV	12.00%	183	-	-	2	18	-
Drinking Fountain-Pirimai	1,489	-	DV	80.40%	1,489	-	-	-	-	-
Fax-Sharp FO-70	307	-	DV	40.00%	307	-	-	-	-	-
Filing Cabinet	248	25	DV	12.00%	223	-	-	3	22	-
Filing Cabinet	356	14	DV	12.00%	342	-	-	2	12	-
Fisher & Paykel 115l Bar Fridge - NTW	334	79	DV	25.00%	255	-	-	20	59	-
Fisher & Paykel Dishwasher - NTW	695	117	DV	30.00%	578	-	-	35	82	-
Fisher & Paykel Dryer - NTW	312	53	DV	30.00%	260	-	-	16	37	-
Fisher & Paykel Freestanding Oven - NTW	826	196	DV	25.00%	630	-	-	49	147	-
Fisher & Paykel Washing Machine - NTW	696	117	DV	30.00%	579	-	-	35	82	-
Flooring & Curtains	1,562	2	DV	22.00%	1,560	-	-	1	2	-
Fridge-Whirlpool	311	4	DV	26.40%	307	-	-	1	3	-
HP 15" Notebook	1,174	318	DV	50.00%	856	-	-	159	159	-
HP Computer	1,599	-	DV	50.00%	-	1,599	-	800	800	-
HP Envy 17-J117TX Notebook - Pirimai	956	60	DV	50.00%	896	-	-	30	30	-
HP Envy 23-1080A Desktop (3 Kindergartens)	3,095	44	DV	50.00%	3,051	-	-	22	22	-
HP Envy 23-1080A Desktop (EM EK)	1,032	15	DV	50.00%	1,017	-	-	7	7	-
HP Envy 23-1080A Desktop (GM)	1,032	15	DV	50.00%	1,017	-	-	7	7	-
HP Envy DV6-7204TU Laptop (5th Reliever)	1,148	18	DV	50.00%	1,130	-	-	9	9	-
HP Pavilion 15"	1,032	387	DV	50.00%	645	-	-	194	194	-
HP Pavilion 15"	1,032	387	DV	50.00%	645	-	-	194	194	-

Depreciation Schedule

NAME	COST	OPENING VALUE	METHOD	RATE	OPENING ACCUM DEP	PURCHASES	DISPOSALS	DEPRECIATION	CLOSING VALUE	PRIVATE USE AMOUNT
HP Pavilion 23-B022A Desktop (Pirimai Infocare)	963	16	DV	50.00%	947	-	-	8	8	-
HP Pavilion 23-F201A Desktop - NTW	954	30	DV	50.00%	924	-	-	15	15	-
HP Pavilion 23-F201A Desktop - Office	954	30	DV	50.00%	924	-	-	15	15	-
HP Pavilion 23-F201A Desktop - Onekawa	954	30	DV	50.00%	924	-	-	15	15	-
HP Pavilion 23-F201A Desktop - Te Awanga	954	30	DV	50.00%	924	-	-	15	15	-
HP Pavilion 23-F201A Desktop - Wairoa	954	30	DV	50.00%	924	-	-	15	15	-
HP Pavilion 23-F201A Desktop (3 of)	3,130	94	DV	50.00%	3,037	-	-	47	47	-
HP Pavilion 23-Q109A Desktop - Carlyle	1,438	195	DV	50.00%	1,243	-	-	97	97	-
HP Pavilion 23-Q109A Desktop - Greenmeadows	1,438	195	DV	50.00%	1,243	-	-	97	97	-
HP Pavilion 23-Q109A Desktop - NKA (Julie)	1,438	195	DV	50.00%	1,243	-	-	97	97	-
HP Pavilion 23-P104A 23" Desktop - Bette Christie	1,017	64	DV	50.00%	954	-	-	32	32	-
HP Pavilion 23-P104A 23" Desktop - BH	1,017	64	DV	50.00%	954	-	-	32	32	-
HP Pavilion 23-P104A 23" Desktop - Marewa	1,017	64	DV	50.00%	954	-	-	32	32	-
HP Pavilion 23-P104A 23" Desktop - Tamatea	1,017	64	DV	50.00%	954	-	-	32	32	-
HP Pavilion X360 14-CD0094TU	1,199	-	DV	50.00%	-	1,199	-	550	649	-
HP X360 13-4101TU 13.3" Notebook - NKA	1,738	290	DV	50.00%	1,449	-	-	145	145	-
Laminator	280	2	DV	26.40%	278	-	-	1	2	-
Laptop (Carlyle)	789	5	DV	50.00%	784	-	-	2	2	-
Laptop Toshiba L750/03C Notebook (J Cox)	1,006	7	DV	50.00%	998	-	-	4	4	-
Laptop-Compaq Presario-Mary Richmond	1,104	-	DV	60.00%	1,104	-	-	-	-	-

Depreciation Schedule

NAME	COST	OPENING VALUE	METHOD	RATE	OPENING ACCUM DEP	PURCHASES	DISPOSALS	DEPRECIATION	CLOSING VALUE	PRIVATE USE AMOUNT
Laptop-Compaq Presario-Whareurangi	925	-	DV	60.00%	925	-	-	-	-	-
Laptop-Dell Vosto-Onekawa	1,219	-	DV	60.00%	1,219	-	-	-	-	-
Laptop-HP DV6-3142TX Notebook (K Elder)	1,166	1	DV	60.00%	1,165	-	-	-	-	-
Laptop-NEC Versa	1,110	1	DV	48.00%	1,109	-	-	-	-	-
Laptop-Presario-Wairoa	1,531	-	DV	60.00%	1,531	-	-	-	-	-
Laptops (2)-Presario-Tamatea	2,913	-	DV	60.00%	2,913	-	-	-	-	-
Laptops (5) Toshiba L750/03C Notebooks (4 Relievers, 1 GM)	5,028	34	DV	50.00%	4,994	-	-	17	17	-
Laptops-Toshiba (2)-Whareurangi	2,109	-	DV	60.00%	2,109	-	-	-	-	-
Laptop-Toshiba C650/028 Notebook & Bag-Taradale	1,058	1	DV	60.00%	1,057	-	-	-	-	-
Laptop-Toshiba C650/128 Notebook-Marewa	1,058	1	DV	60.00%	1,057	-	-	-	-	-
Laptop-Toshiba L650/OK4 Notebook	1,379	1	DV	60.00%	1,378	-	-	1	1	-
LG Washer Dryer - Onekawa	1,130	251	DV	30.00%	878	-	-	75	176	-
Mitsubishi Fridge Freezer - NTW	765	181	DV	25.00%	584	-	-	45	136	-
Multifunction-Brother MFC9420CN	1,076	-	DV	48.00%	1,076	-	-	-	-	-
PABX	1,962	235	DV	25.00%	1,727	-	-	59	176	-
Palm	675	-	DV	48.00%	675	-	-	-	-	-
Panasonic Microwave Oven - NTW	173	5	DV	50.00%	168	-	-	3	3	-
Paper Folding Machine	1,393	979	DV	25.00%	414	-	-	245	735	-
PC-Leonie	1,555	-	DV	60.00%	1,555	-	-	-	-	-
Pinboard-Slate	290	57	DV	11.40%	233	-	-	6	50	-
Pinboard-Slate	310	60	DV	11.40%	250	-	-	7	54	-
Pinsboards (2)-Slate/Surf	510	99	DV	11.40%	411	-	-	11	88	-
Printer-HP PSC1210	222	-	DV	39.60%	222	-	-	-	-	-
Reception Desk & Mobile Units	3,238	388	DV	14.40%	2,850	-	-	56	332	-

Depreciation Schedule

NAME	COST	OPENING VALUE	METHOD	RATE	OPENING ACCUM DEP	PURCHASES	DISPOSALS	DEPRECIATION	CLOSING VALUE	PRIVATE USE AMOUNT
Samsung Galaxy SIII Smartphones (3)	1,812	1	DV	67.00%	1,811	-	-	1	-	-
Shelving	960	179	DV	11.40%	781	-	-	20	159	-
Shelving Unit Lundia	1,445	283	DV	11.40%	1,162	-	-	32	250	-
Storage Unit-Black	1,250	86	DV	18.00%	1,164	-	-	15	71	-
Storage Unit-Midnight	1,250	86	DV	18.00%	1,164	-	-	15	71	-
Table	319	11	DV	14.40%	308	-	-	2	9	-
Table-Novella Round	230	13	DV	14.40%	217	-	-	2	11	-
Table-Red	780	97	DV	14.40%	683	-	-	14	83	-
Telephone System-Aria	2,607	17	DV	31.20%	2,590	-	-	5	12	-
Televideo-Sharp	1,111	-	DV	39.60%	1,111	-	-	-	-	-
Toshiba L50 15.6" Notebook - NTW Reliever	973	43	DV	50.00%	930	-	-	22	22	-
Toshiba L50 15.6" Notebook - Reliever	1,217	44	DV	50.00%	1,172	-	-	22	22	-
Toshiba L50 15.6" Notebook (3) - NTW	2,606	81	DV	50.00%	2,525	-	-	41	41	-
Toshiba L50-B09K Notebook - R Ryan	1,069	72	DV	50.00%	996	-	-	36	36	-
Toshiba L50-C03E 15.6" Notebook	1,084	119	DV	50.00%	966	-	-	59	59	-
Toshiba L750/OS5 Laptop (2)	2,120	19	DV	50.00%	2,100	-	-	10	10	-
Various Office Furniture-Taradale	6,410	2,059	DV	13.00%	4,351	-	-	268	1,791	-
Visitor Charis (30)	3,420	646	DV	19.20%	2,774	-	-	124	522	-
Washer Dryer Combo-Marewa	1,159	63	DV	30.00%	1,096	-	-	19	44	-
Washer Dryer Combo-Wairoa	1,376	27	DV	36.00%	1,349	-	-	10	17	-
Washer Dryer Combo-WNT	1,288	25	DV	36.00%	1,263	-	-	9	16	-
Washer/Dryer Combo-Riversdale	1,685	32	DV	36.00%	1,653	-	-	11	20	-
Whiteboard & Easel	251	3	DV	15.00%	248	-	-	-	2	-
Workstation-Novella	343	42	DV	14.40%	301	-	-	6	36	-

Depreciation Schedule

NAME	COST	OPENING VALUE	METHOD	RATE	OPENING ACCUM DEP	PURCHASES	DISPOSALS	DEPRECIATION	CLOSING VALUE	PRIVATE USE AMOUNT
Worktop, bookcase, cupboard & credenza-Riversdale	3,605	784	DV	15.60%	2,821	-	-	122	661	-
Total Plant & Equipment	235,978	13,418			219,762	2,798	-	4,717	11,499	-
Property Improvements - At cost										
Airconditioner-Fujitsu-Pirimai	2,043	239	DV	24.00%	1,804	-	-	57	182	-
Airconditioner - Fujitsu-Riversdale	2,150	406	DV	24.00%	1,744	-	-	97	309	-
Airconditioner - Fujitsu-Wairoa	2,150	406	DV	24.00%	1,744	-	-	97	309	-
Airconditioner - Fujitsu-Wycliffe	2,150	406	DV	24.00%	1,744	-	-	97	309	-
Airconditioner-Fujitsu-Office	1,600	308	DV	20.00%	1,292	-	-	62	246	-
Airconditioner-Fujitsu-Bette Christie	6,577	-	SL	16.20%	6,577	-	-	-	-	-
Airconditioner-Fujitsu-Carlyle	2,043	233	DV	24.00%	1,810	-	-	56	177	-
Airconditioner-Fujitsu- Greenmeadows	2,043	332	DV	20.00%	1,711	-	-	66	265	-
Airconditioner-Fujitsu-Main Office	2,688	508	DV	24.00%	2,180	-	-	122	386	-
Airconditioner-Fujitsu-Marewa	2,043	233	DV	24.00%	1,810	-	-	56	177	-
Airconditioner-Fujitsu-Mary Richmond	6,577	-	SL	16.20%	6,577	-	-	-	-	-
Airconditioner-Fujitsu-Mary Richmond	2,043	239	DV	24.00%	1,804	-	-	57	182	-
Airconditioner-Fujitsu- Tamatea	2,043	233	DV	24.00%	1,810	-	-	56	177	-
Airconditioner-Fujitsu- Taradale	2,138	245	DV	24.00%	1,894	-	-	59	186	-
Airconditioner-Fujitsu-Te Awanga	2,044	-	SL	16.20%	2,044	-	-	-	-	-
Airconditioner-Fujitsu- Wharerangi	2,043	239	DV	24.00%	1,804	-	-	57	182	-
Airconditioner-Office	3,111	-	SL	16.20%	3,111	-	-	-	-	-
Airconditioners (2)-Fujitsu-Carlyle	5,866	-	SL	16.20%	5,866	-	-	-	-	-
Airconditioners (2)-Fujitsu-Eskview	5,866	-	SL	16.20%	5,866	-	-	-	-	-

Depreciation Schedule

NAME	COST	OPENING VALUE	METHOD	RATE	OPENING ACCUM DEP	PURCHASES	DISPOSALS	DEPRECIATION	CLOSING VALUE	PRIVATE USE AMOUNT
Airconditioners (2)-Fujitsu-Greenmeadows	5,866	-	SL	16.20%	5,866	-	-	-	-	-
Airconditioners (2)-Fujitsu-Pirimai	5,866	-	SL	16.20%	5,866	-	-	-	-	-
Airconditioners (2)-Fujitsu-Riversdale	5,866	-	SL	16.20%	5,866	-	-	-	-	-
Airconditioners (2)-Fujitsu-Tamatea	5,866	-	SL	16.20%	5,866	-	-	-	-	-
Airconditioners (2)-Fujitsu-Whararangi	5,866	-	SL	16.20%	5,866	-	-	-	-	-
Airconditioners (2)-Fujitsu-WNT	5,866	-	SL	16.20%	5,866	-	-	-	-	-
Airconditioners (4)-Fujitsu-Main Office	8,601	1,624	DV	24.00%	6,977	-	-	390	1,234	-
Airconditioners (4)-Fujitsu-Te Awanga	13,511	-	SL	16.20%	13,511	-	-	-	-	-
Airconditioner-Wairoa	5,866	-	SL	16.20%	5,866	-	-	-	-	-
Bette Christie	7,218	3,077	SL	2.50%	4,141	-	-	180	2,897	-
Bette Christie - Alterations & Extensions 2013	169,431	148,352	DV	2.50%	21,078	-	-	3,709	144,644	-
Bette Christie Improvements	65,569	65,569	None		-	-	-	-	65,569	-
Building Signage	5,473	-	SL	11.40%	5,473	-	-	-	-	-
Carlyle - Alterations & Extensions 2013	195,785	169,990	DV	2.50%	25,795	-	-	4,250	165,740	-
Carlyle Improvements	69,964	69,964	None		-	-	-	-	69,964	-
Eskview Improvements	82,443	82,443	None		-	-	-	-	82,443	-
Garden Shed	439	13	DV	15.00%	427	-	-	2	11	-
Greenmeadows Improvements	99,794	99,794	None		-	-	-	-	99,794	-
Head Office Improvements	-	-	None		-	-	-	-	-	-
Heat Pump Panasonic-Marewa	5,200	-	SL	15.00%	5,200	-	-	-	-	-
Marewa Improvements	65,625	65,625	None		-	-	-	-	65,625	-
Mary Richmond	829	347	SL	2.50%	482	-	-	21	326	-
Mary Richmond	2,500	1,059	SL	2.50%	1,441	-	-	63	997	-
Mary Richmond Improvements	88,503	88,503	None		-	-	-	-	88,503	-

Depreciation Schedule



NAME	COST	OPENING VALUE	METHOD	RATE	OPENING ACCUM DEP	PURCHASES	DISPOSALS	DEPRECIATION	CLOSING VALUE	PRIVATE USE AMOUNT
Office Building	15,600	-	SL	2.50%	15,600	-	-	-	-	-
Office Extension-Eskiew	16,432	12,924	SL	2.00%	3,508	-	-	329	12,595	-
Onekawa Improvements	90,000	90,000	None	-	-	-	-	-	90,000	-
Pirimai Improvements	72,940	72,940	None	-	-	-	-	-	72,940	-
Redecorating-Mary Richmond	5,536	-	SL	15.00%	5,536	-	-	-	-	-
Reroofing-Greenmeadows	12,124	8,564	SL	2.50%	3,560	-	-	303	8,261	-
Riversdale Improvements	70,283	70,283	None	-	-	-	-	-	70,283	-
Sewer Line-Eskview	2,467	1,564	SL	2.50%	903	-	-	62	1,502	-
Share Building-Te Awanga	14,866	8,915	SL	2.50%	5,951	-	-	372	8,543	-
Tamatea - Alterations & Extensions 2013	152,180	132,131	DV	2.50%	20,050	-	-	3,303	128,827	-
Tamatea Improvements	78,964	78,964	None	-	-	-	-	-	78,964	-
Taradale Improvements	73,036	73,036	None	-	-	-	-	-	73,036	-
Te Awanga Improvements	89,336	89,336	None	-	-	-	-	-	89,336	-
Wairoa NTW - Improvements	59,362	59,362	None	-	-	-	-	-	59,362	-
Wairoa NTW - Playground	51,914	27,163	DV	13.00%	24,750	-	-	3,531	23,632	-
Whararangi Improvements	76,940	76,940	None	-	-	-	-	-	76,940	-
Wycliffe Nga Tamariki Improvements	82,283	82,283	None	-	-	-	-	-	82,283	-
Total Property Improvements - At cost	1,943,431	1,684,790			258,641	-	-	17,454	1,667,336	-
Total	7,525,230	5,451,607			606,156	1,467,467	-	23,668	6,895,406	-